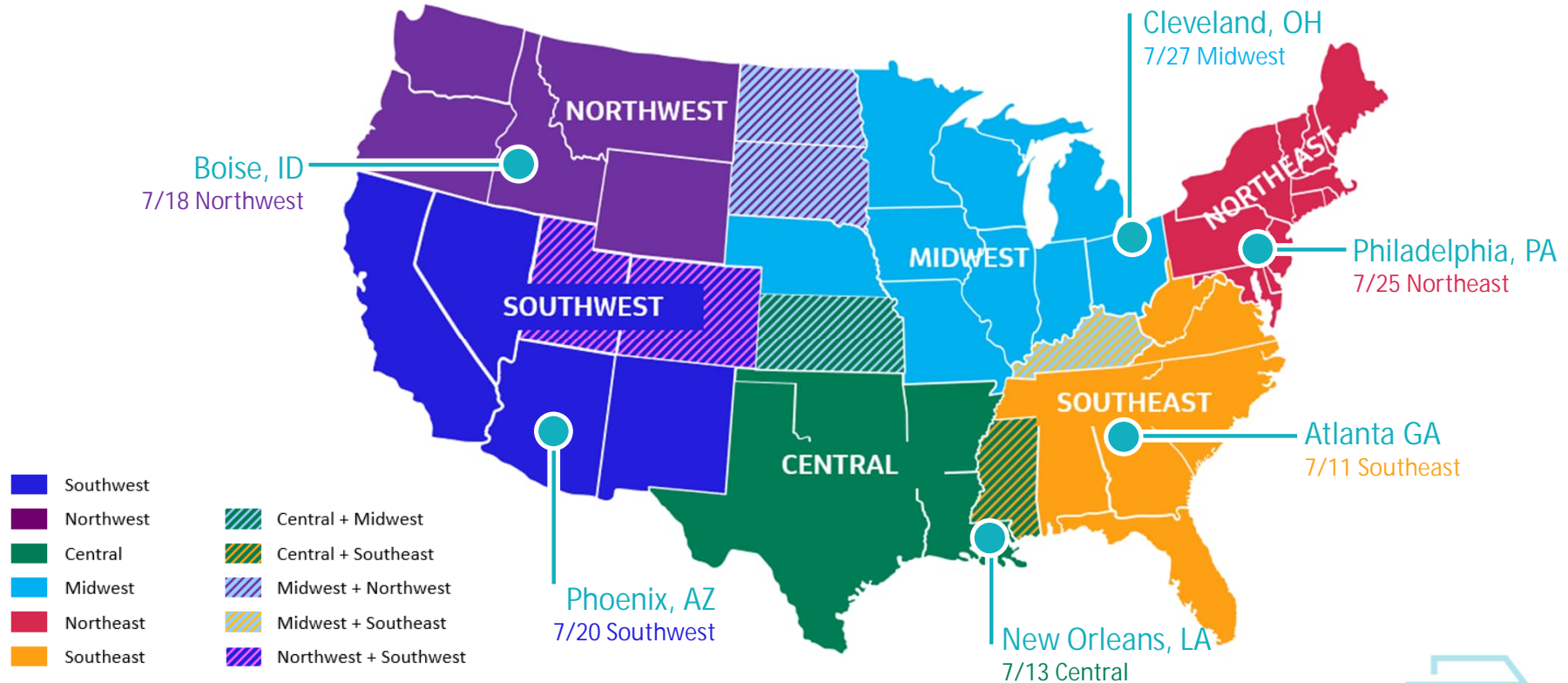




Southeast Working Group Meeting 2 – Regional Enhanced Network Development Slides

July 11, 2023

Long-Distance Service Study Regions: Stakeholder Group Meetings



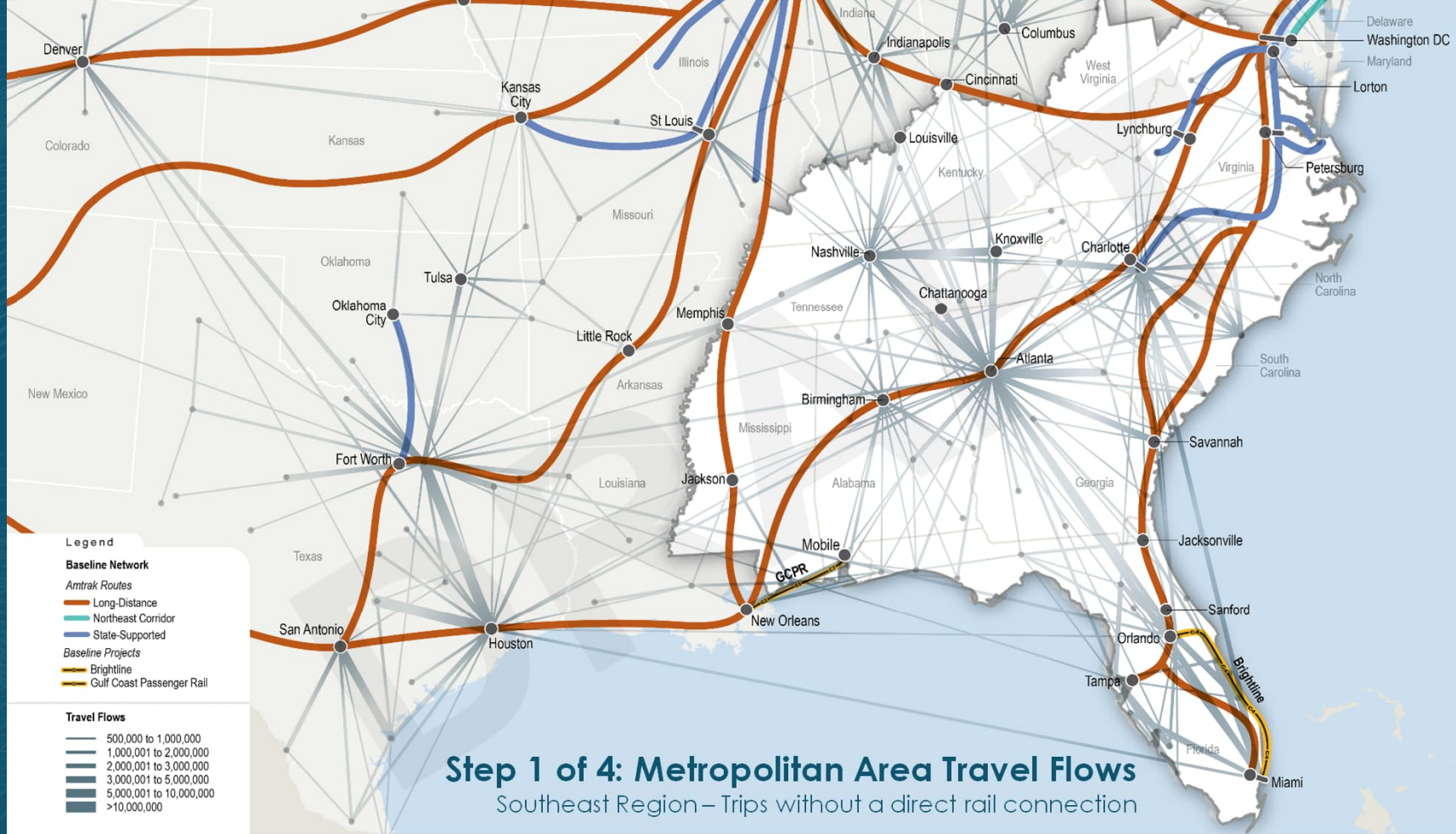
STEP 1 – METROPOLITAN AREA TRAVEL FLOWS

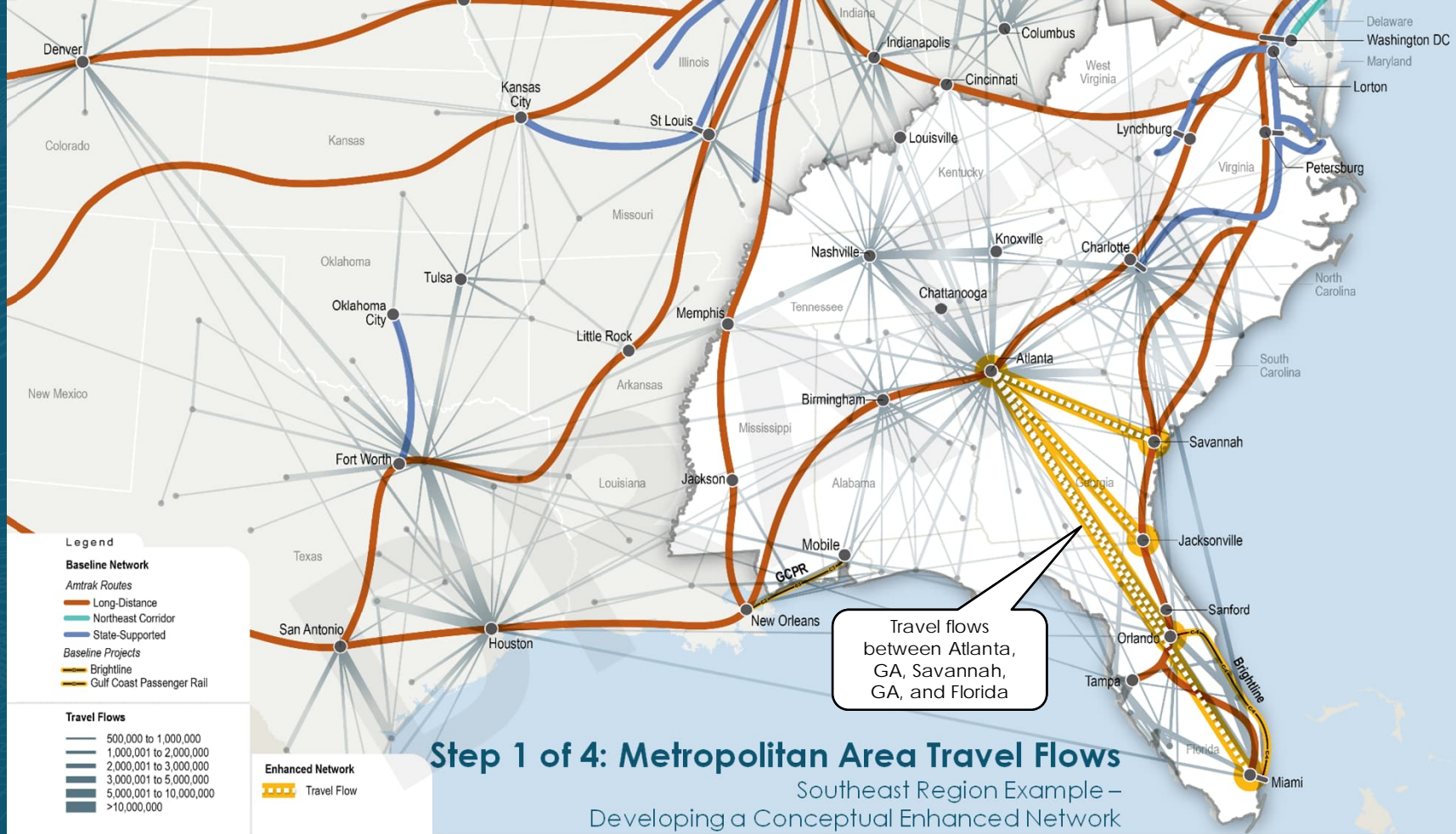
Step 1 of 4: Metropolitan Area Travel Flows

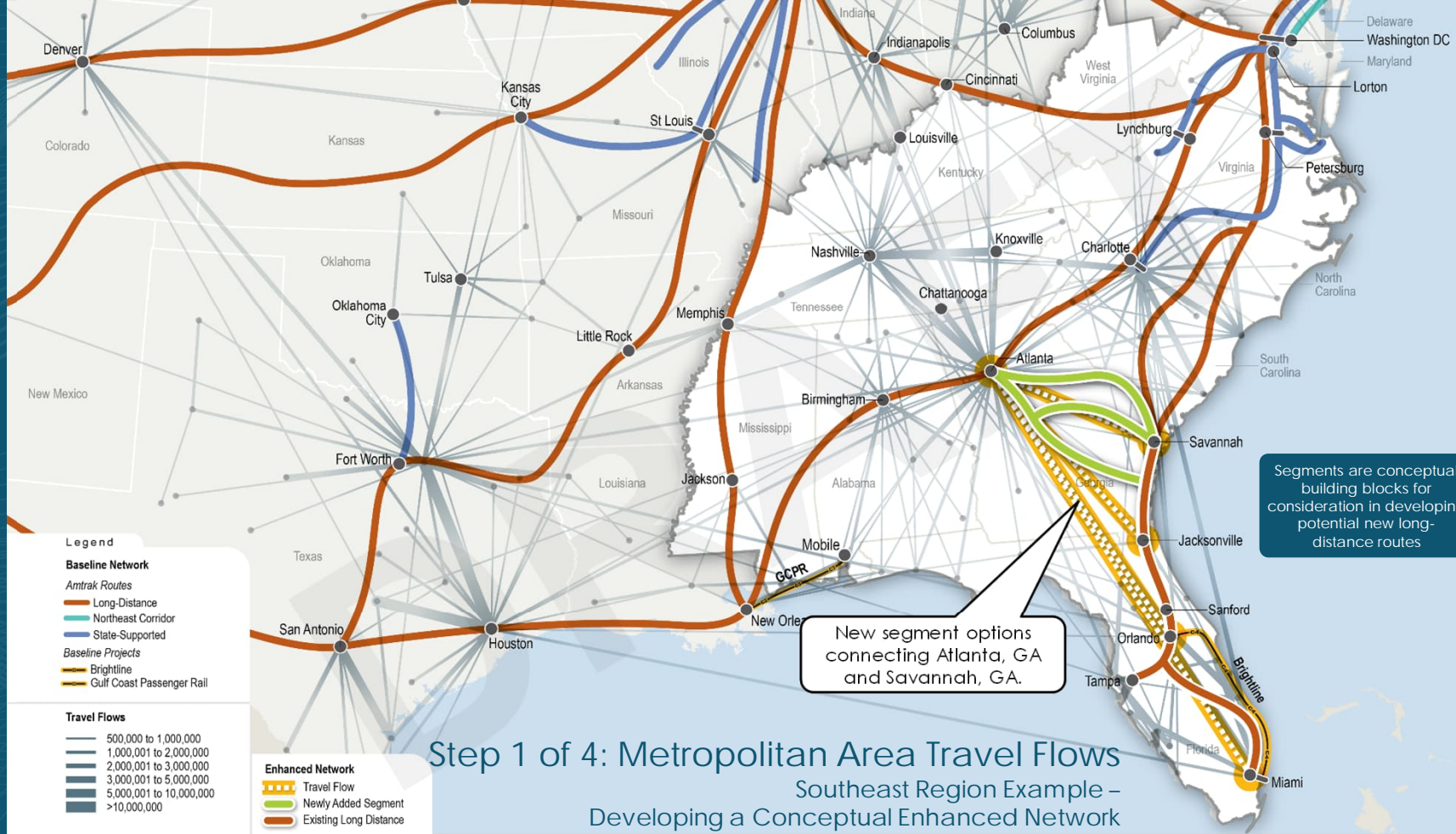
Developing a Conceptual Enhanced Network

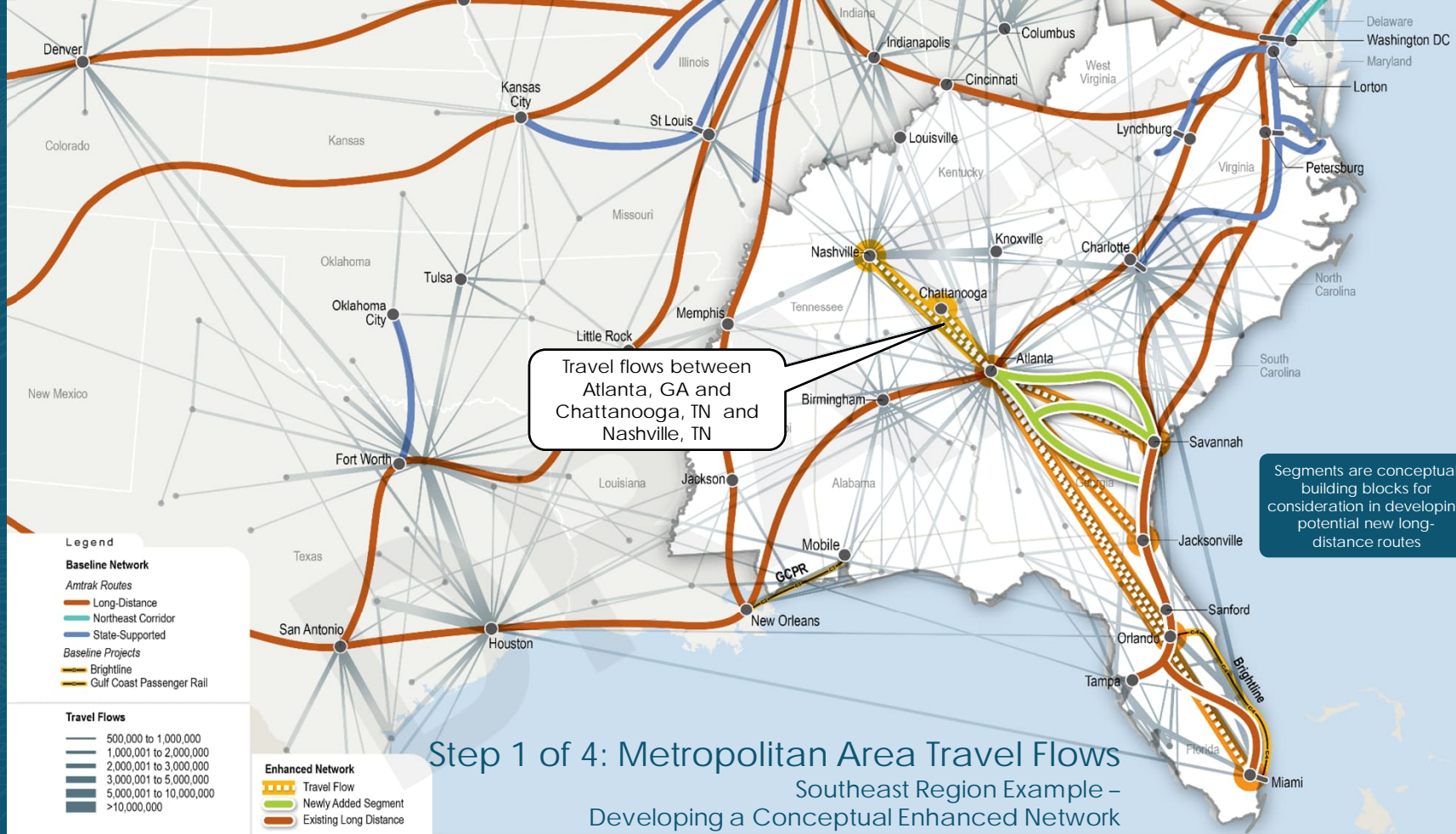


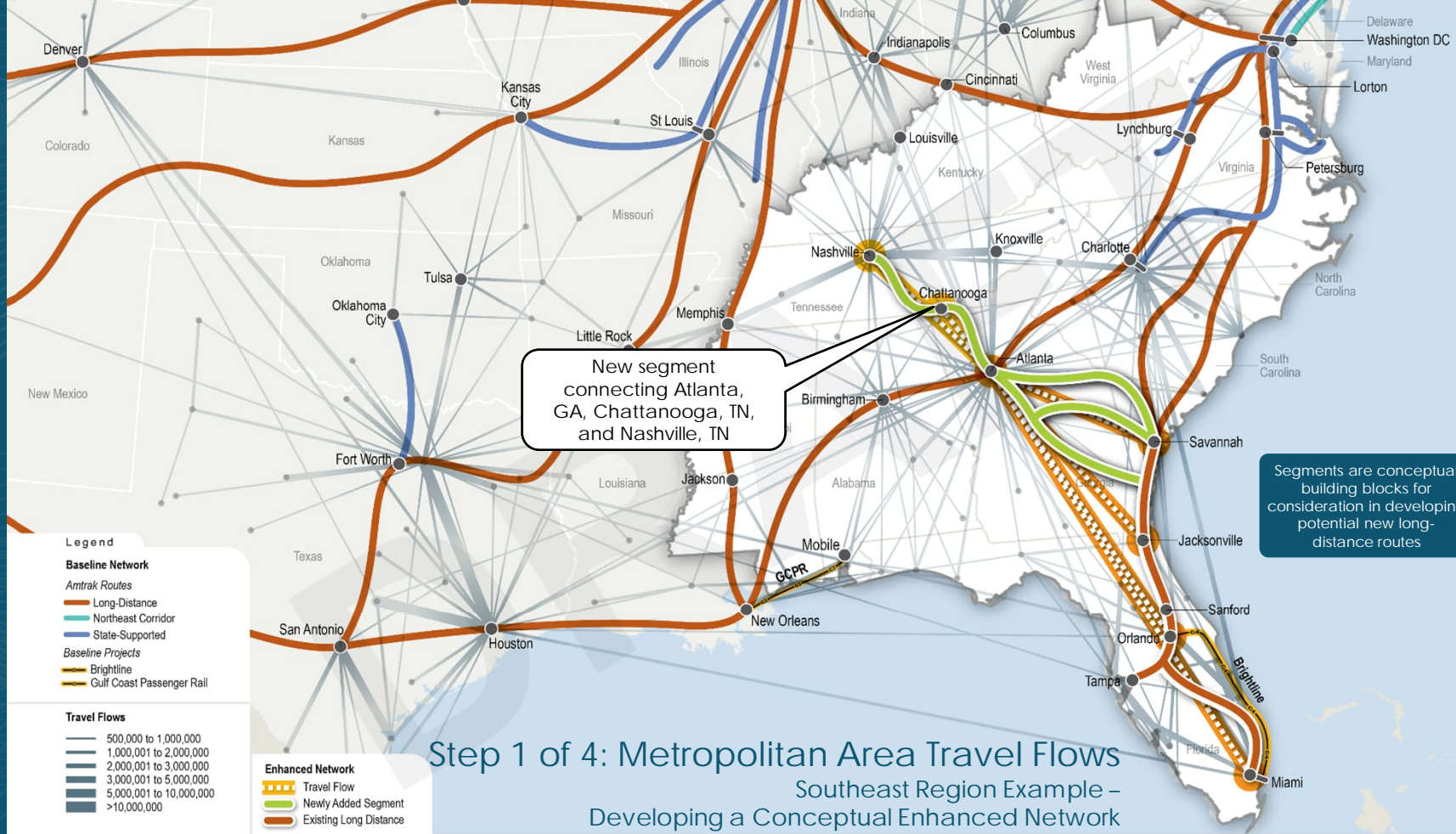
STEP 1 OF 4: METROPOLITAN AREA TRAVEL FLOWS REGIONAL EXAMPLES

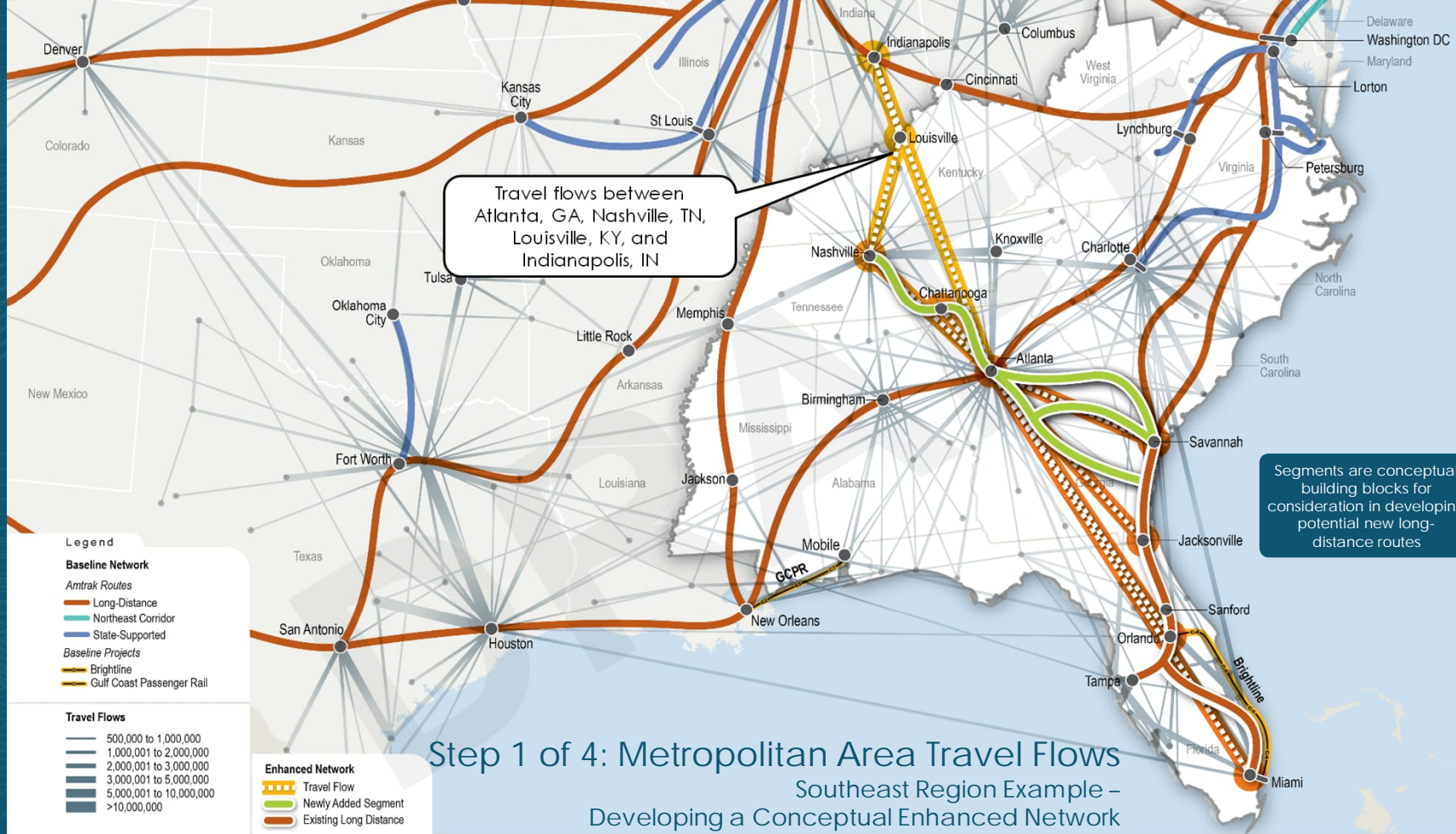


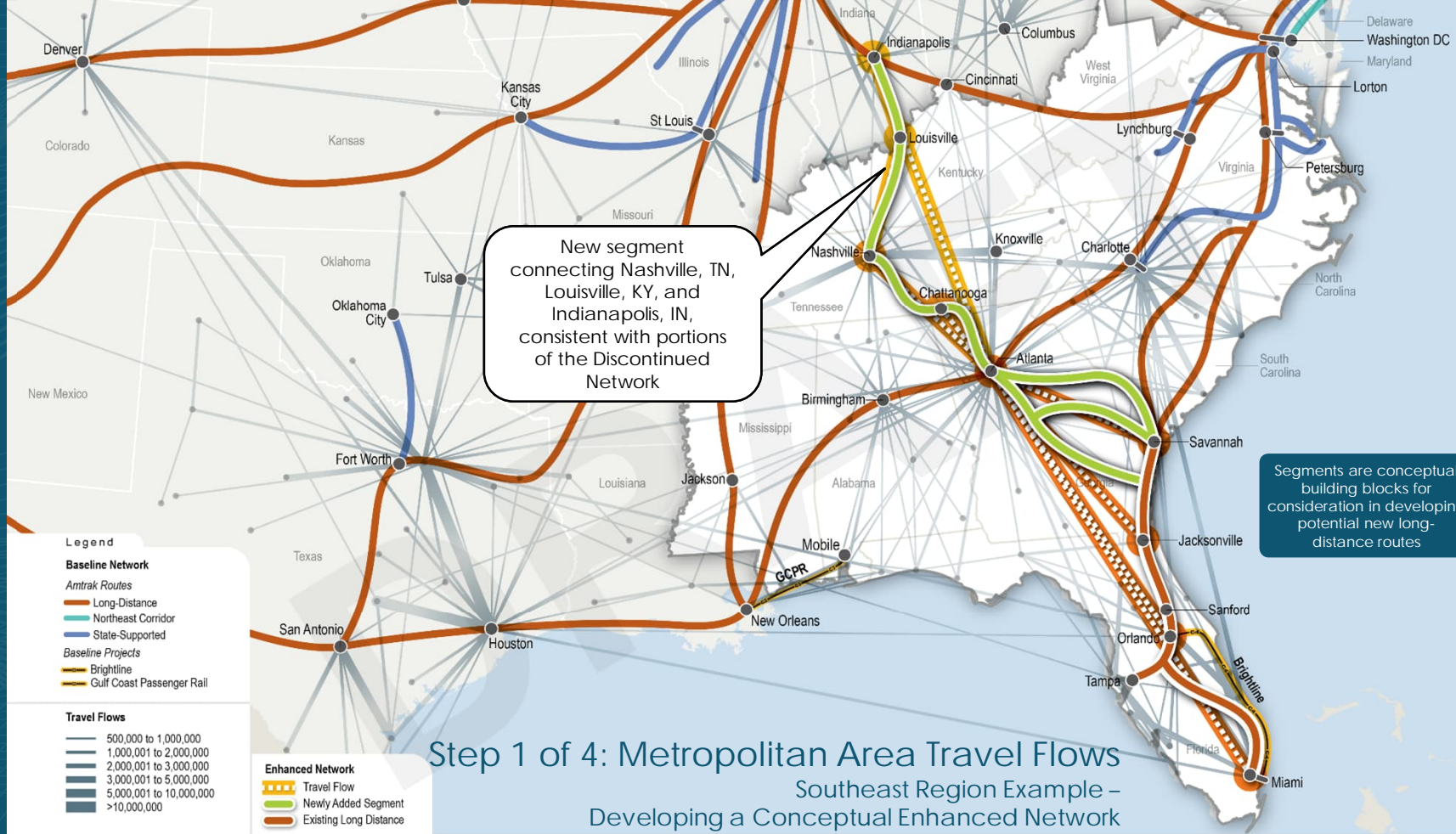


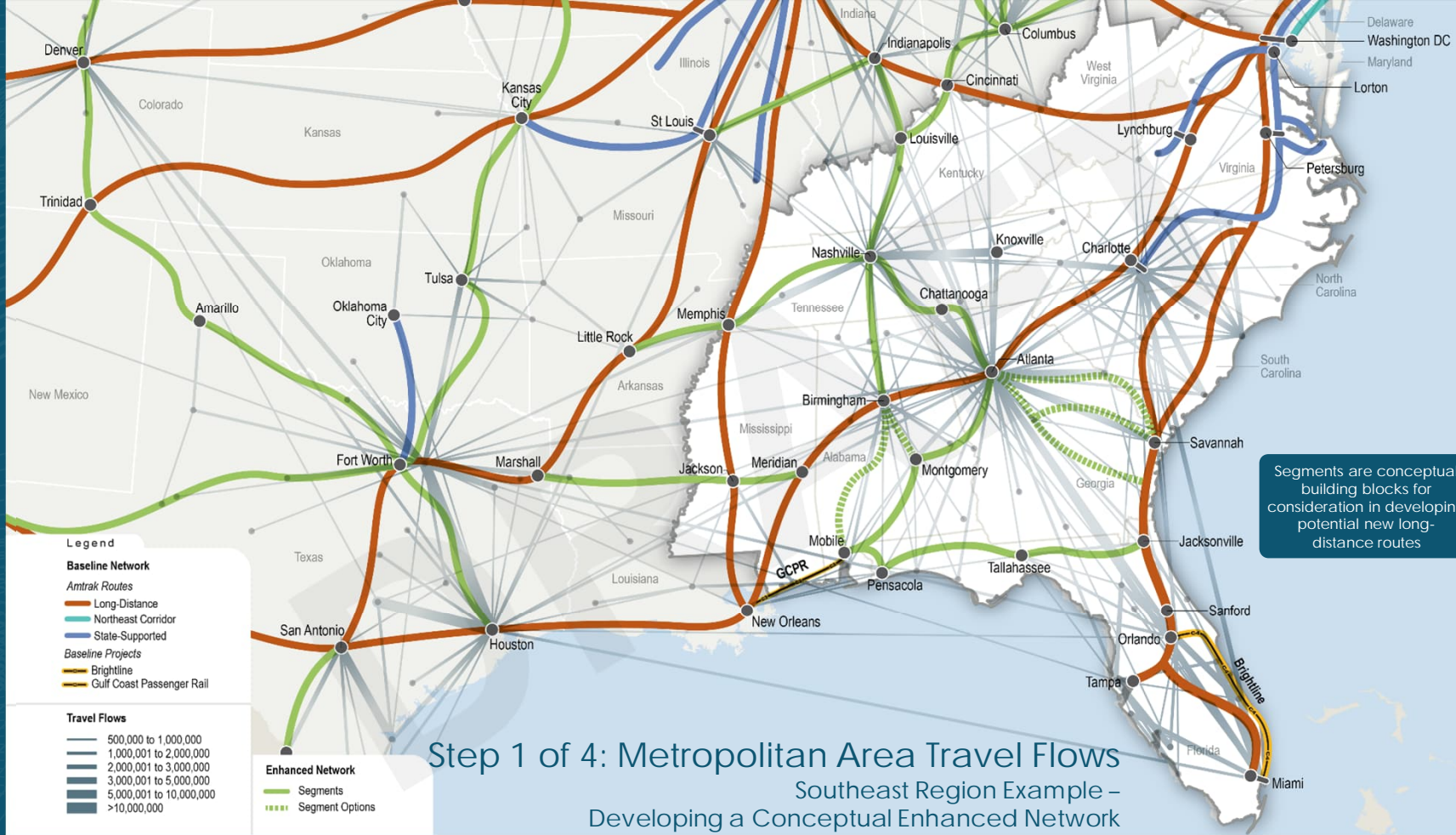


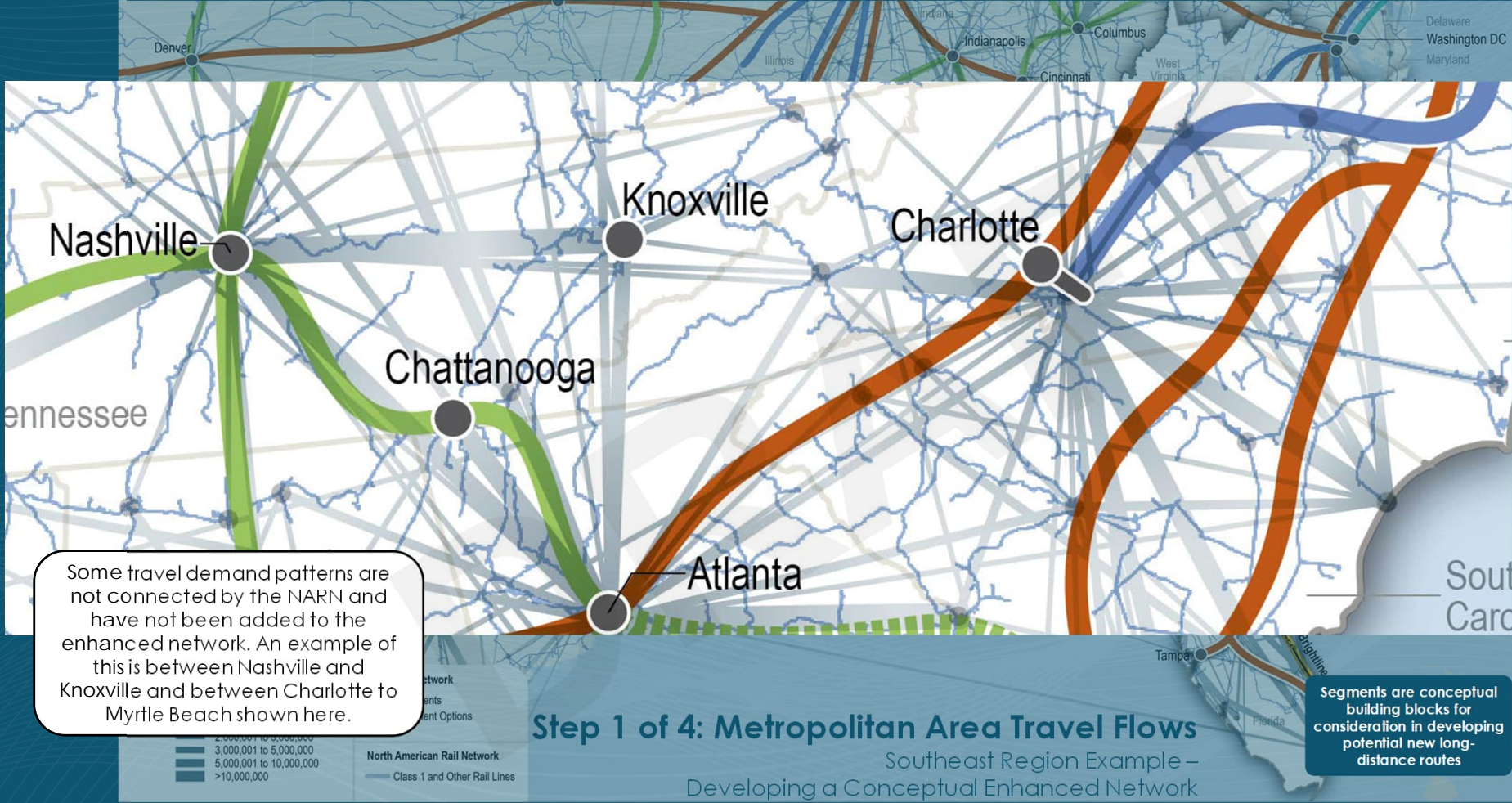












Some travel demand patterns are not connected by the NARN and have not been added to the enhanced network. An example of this is between Nashville and Knoxville and between Charlotte to Myrtle Beach shown here.

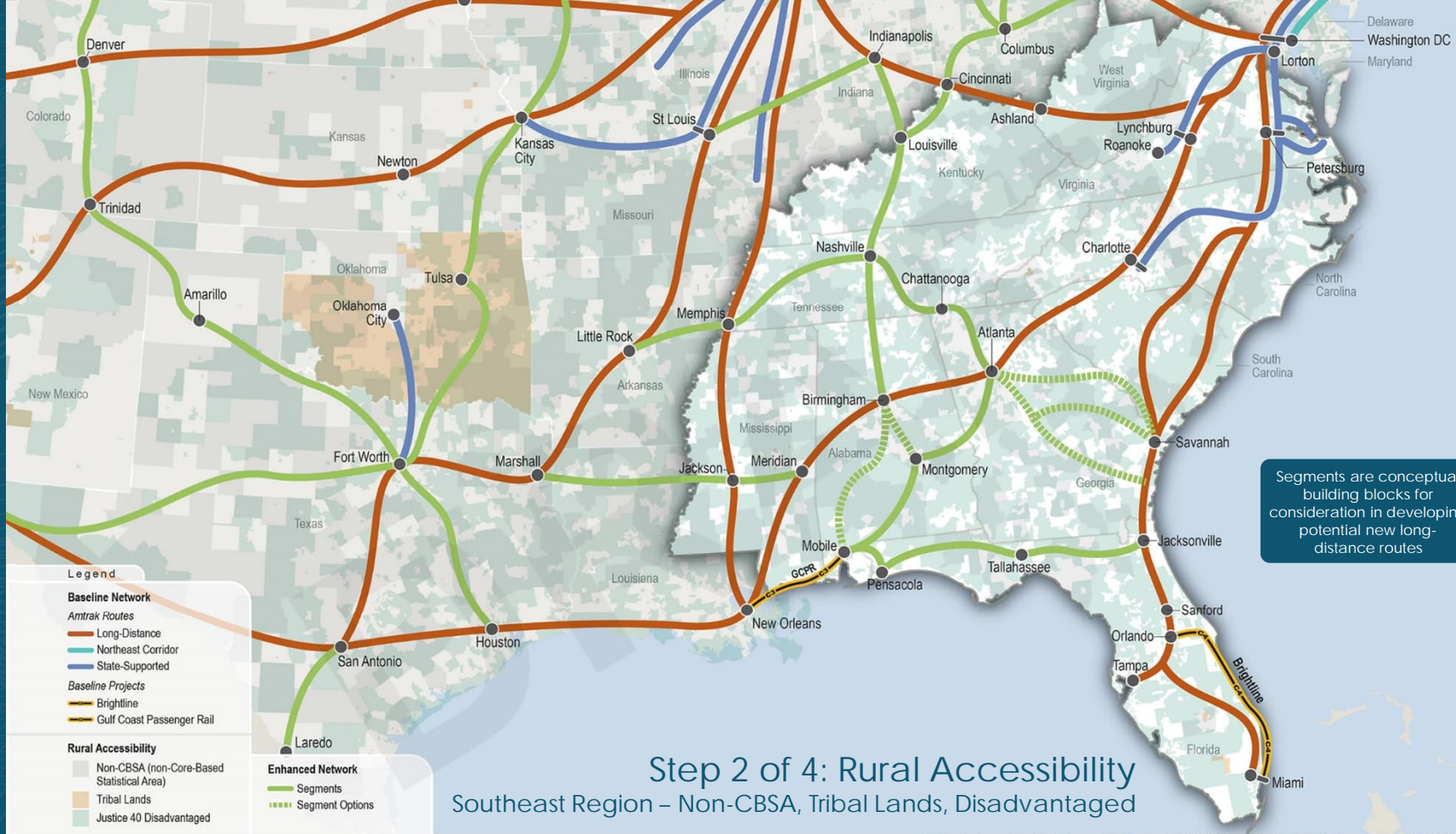
Step 1 of 4: Metropolitan Area Travel Flows

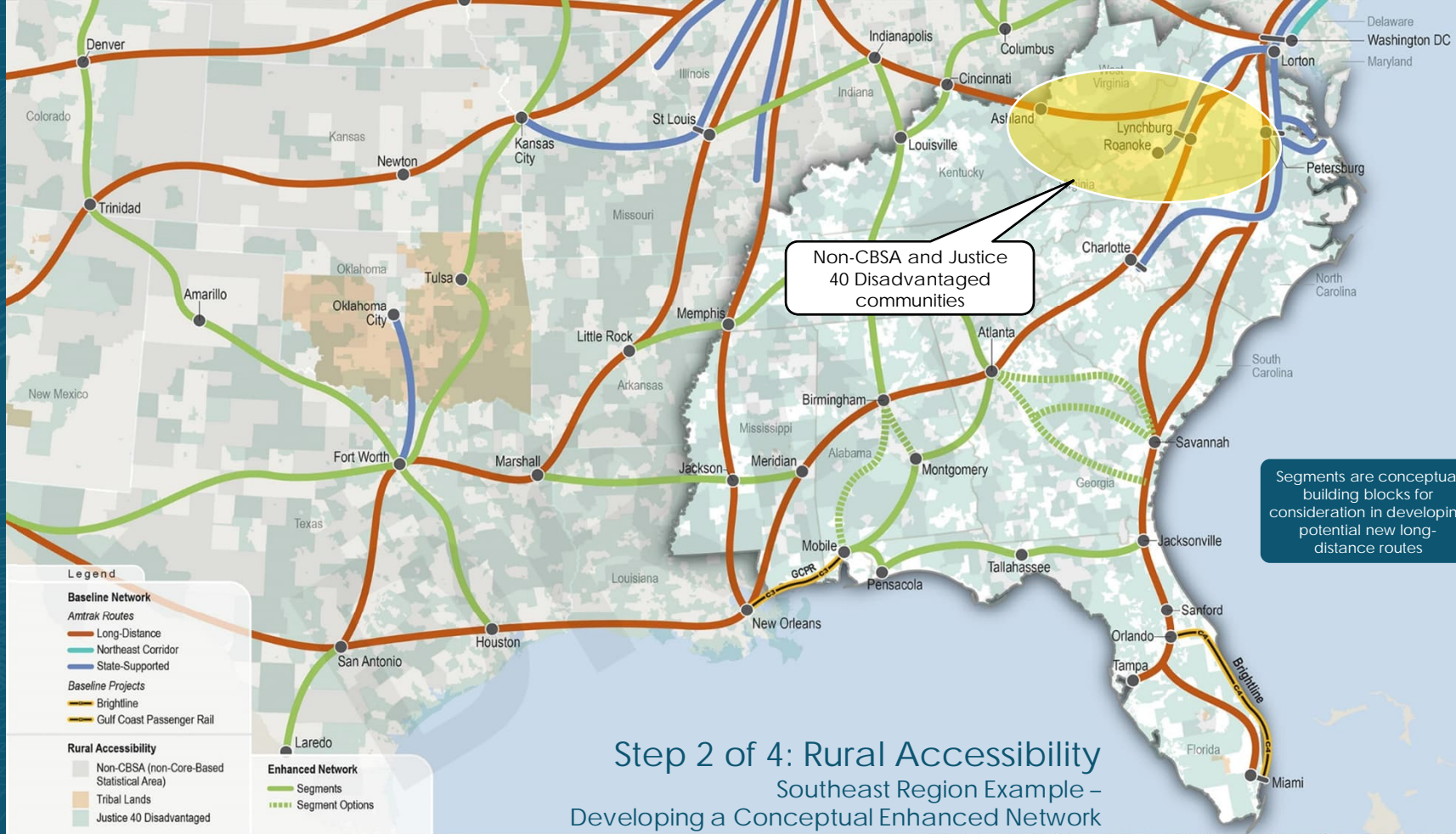
Southeast Region Example –
Developing a Conceptual Enhanced Network

Segments are conceptual building blocks for consideration in developing potential new long-distance routes

STEP 2: RURAL ACCESSIBILITY

STEP 2 OF 4: RURAL ACCESSIBILITY REGIONAL EXAMPLES



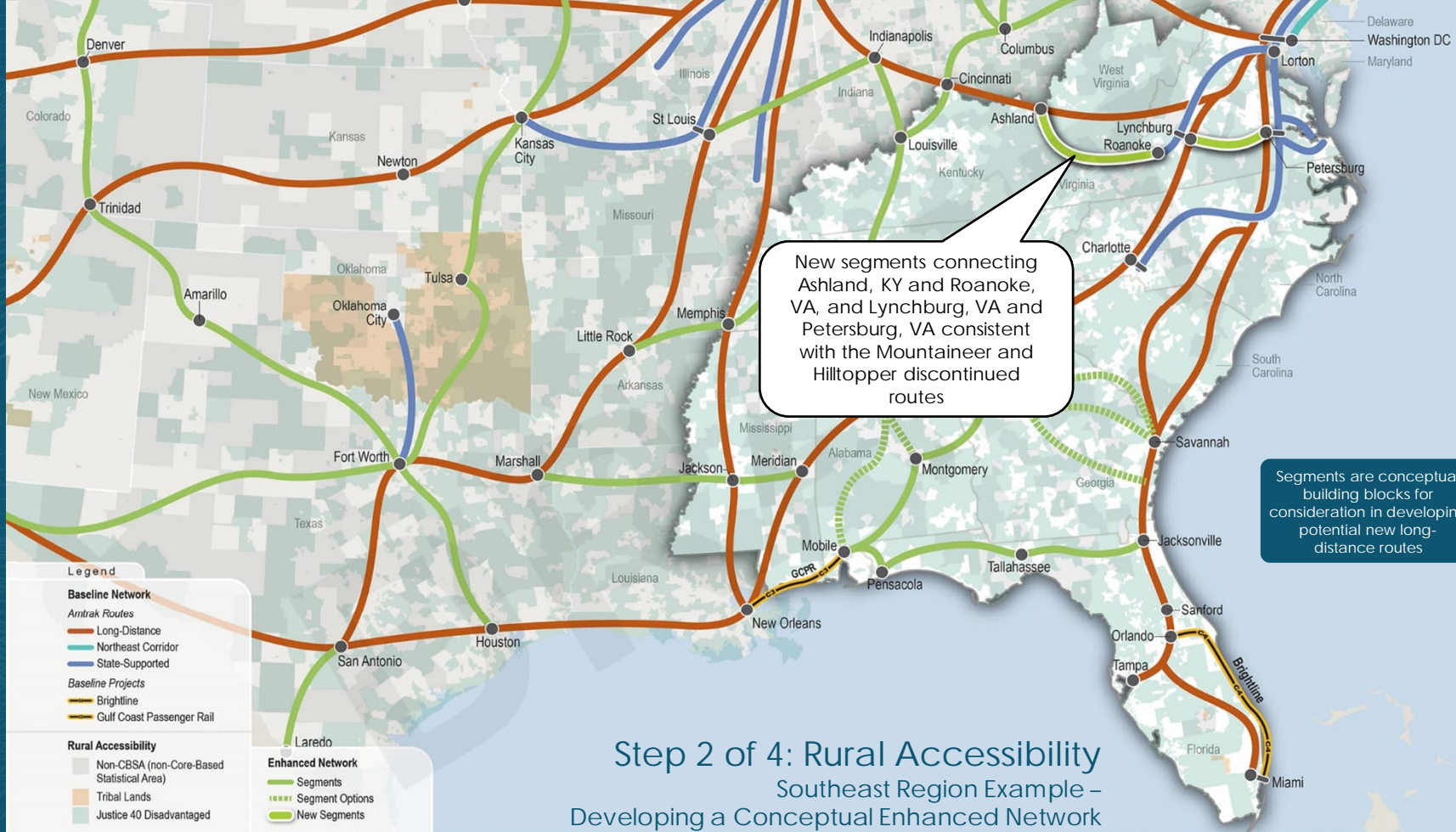


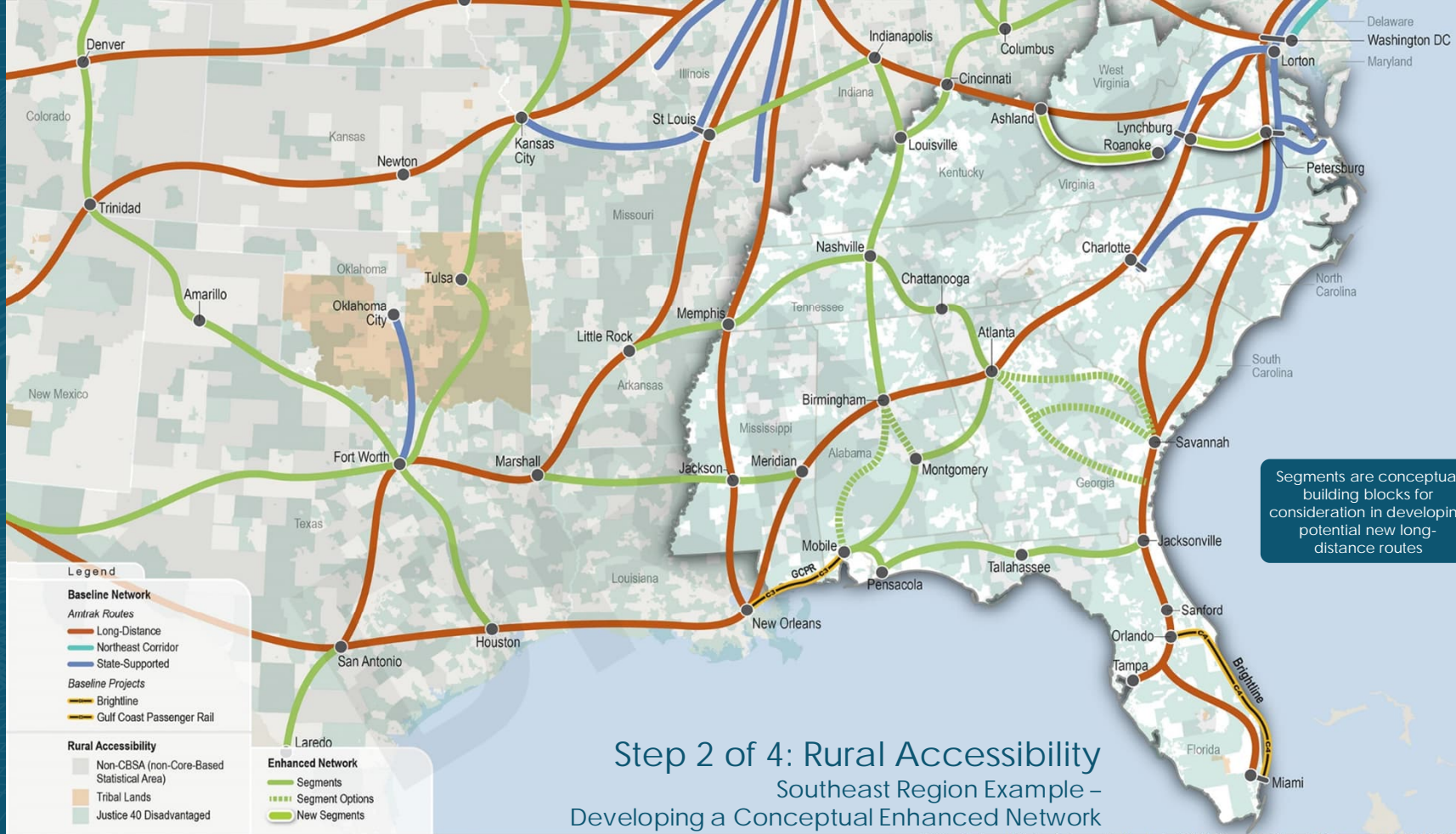
Non-CBSA and Justice 40 Disadvantaged communities

Segments are conceptual building blocks for consideration in developing potential new long-distance routes

Step 2 of 4: Rural Accessibility Southeast Region Example – Developing a Conceptual Enhanced Network

Existing Route and Station Data provided by Amtrak 2022; Committed Projects Data provided by FRA 2023





STEP 3 – GEOGRAPHIC COVERAGE/NETWORK CONNECTIVITY

Step 3 of 4: Geographic Coverage

Developing a Conceptual Enhanced Network



Legend

Baseline Network

Amtrak Routes

— Long-Distance

— Northeast Corridor

— State-Supported

Baseline Projects

— Brightline

— Gulf Coast Passenger Rail

— Twin Cities-Milwaukee-Chicago

— CAHSR MOS

Enhanced Network

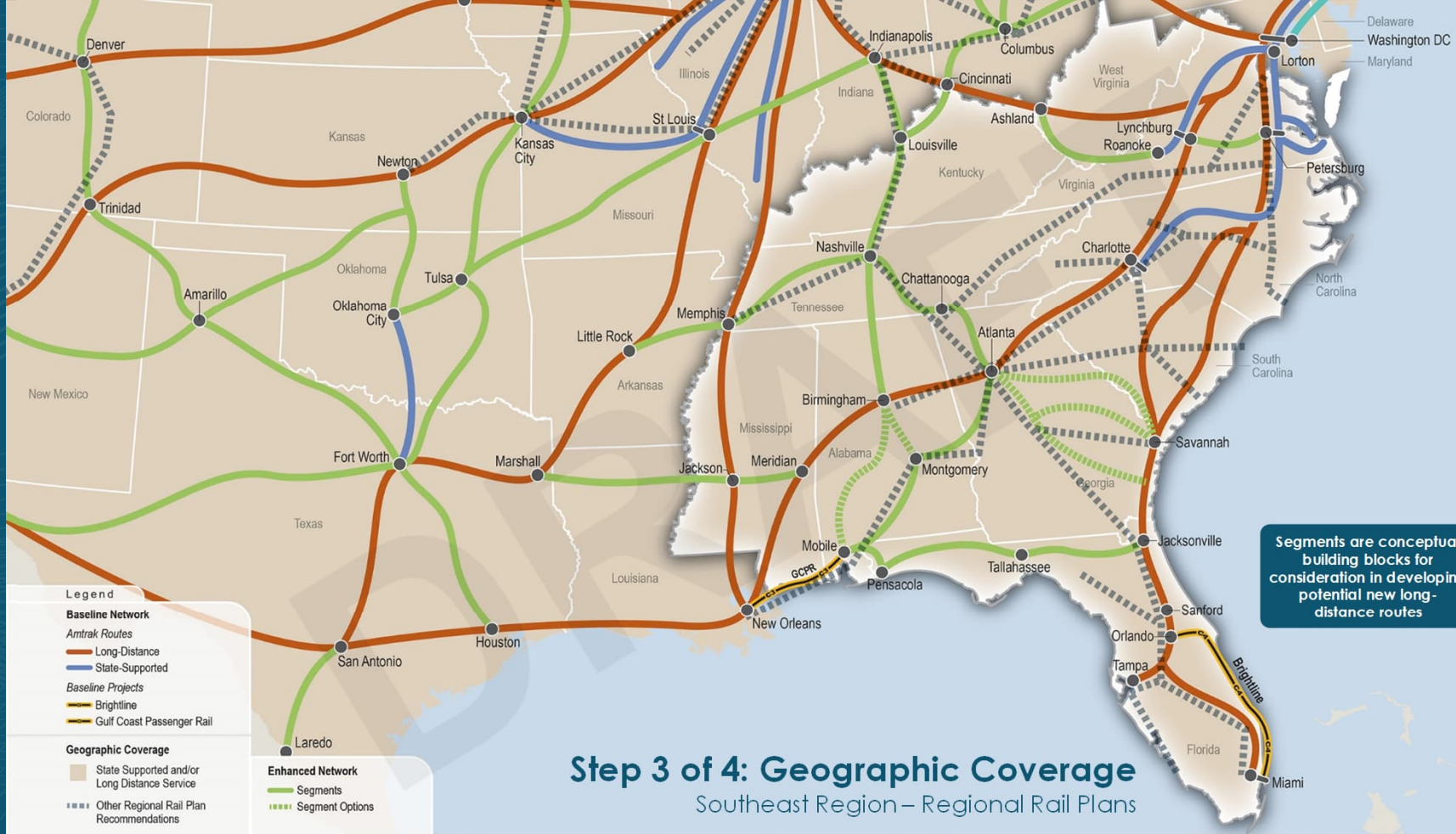
— Segments

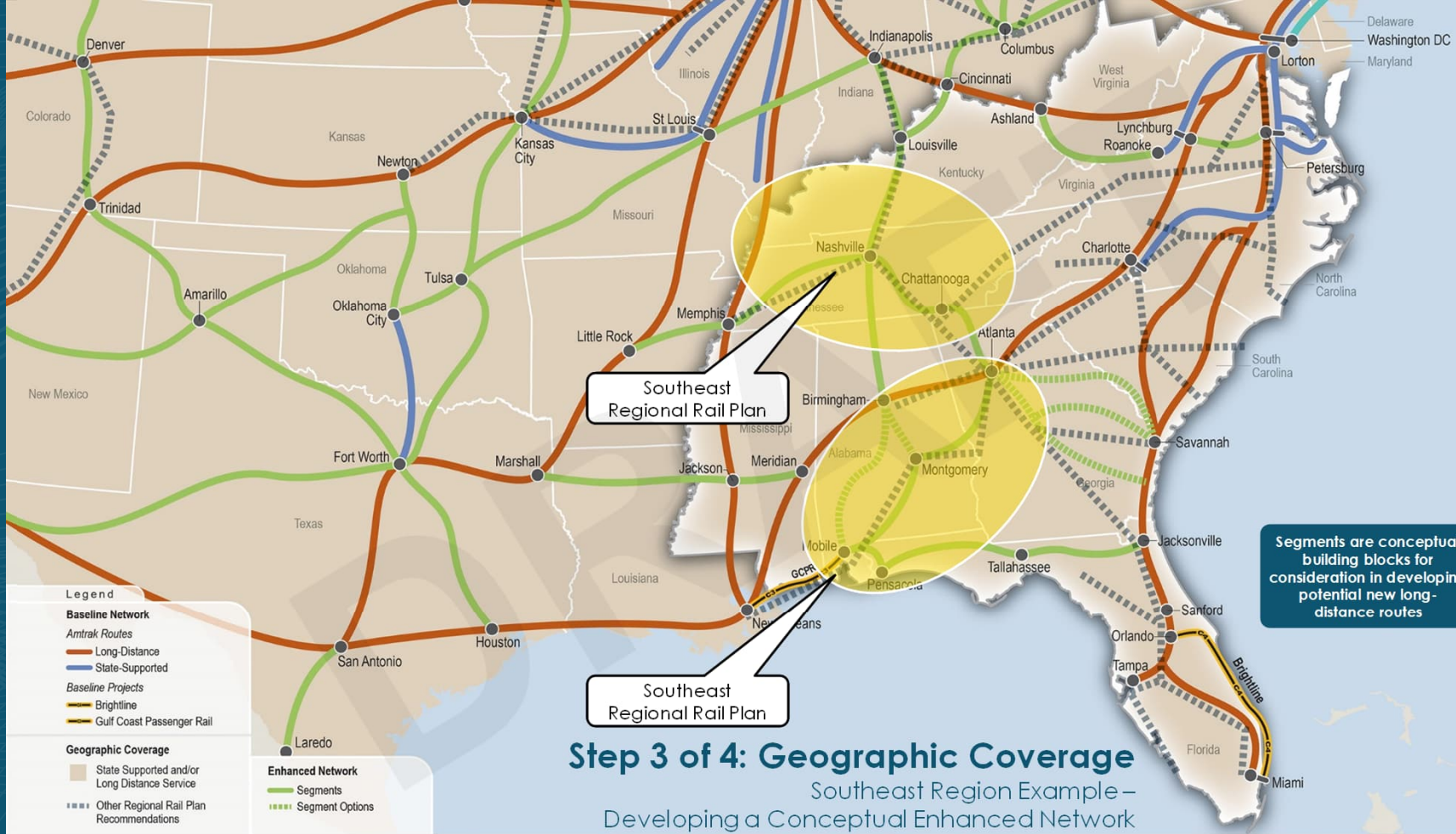
— Segment Options

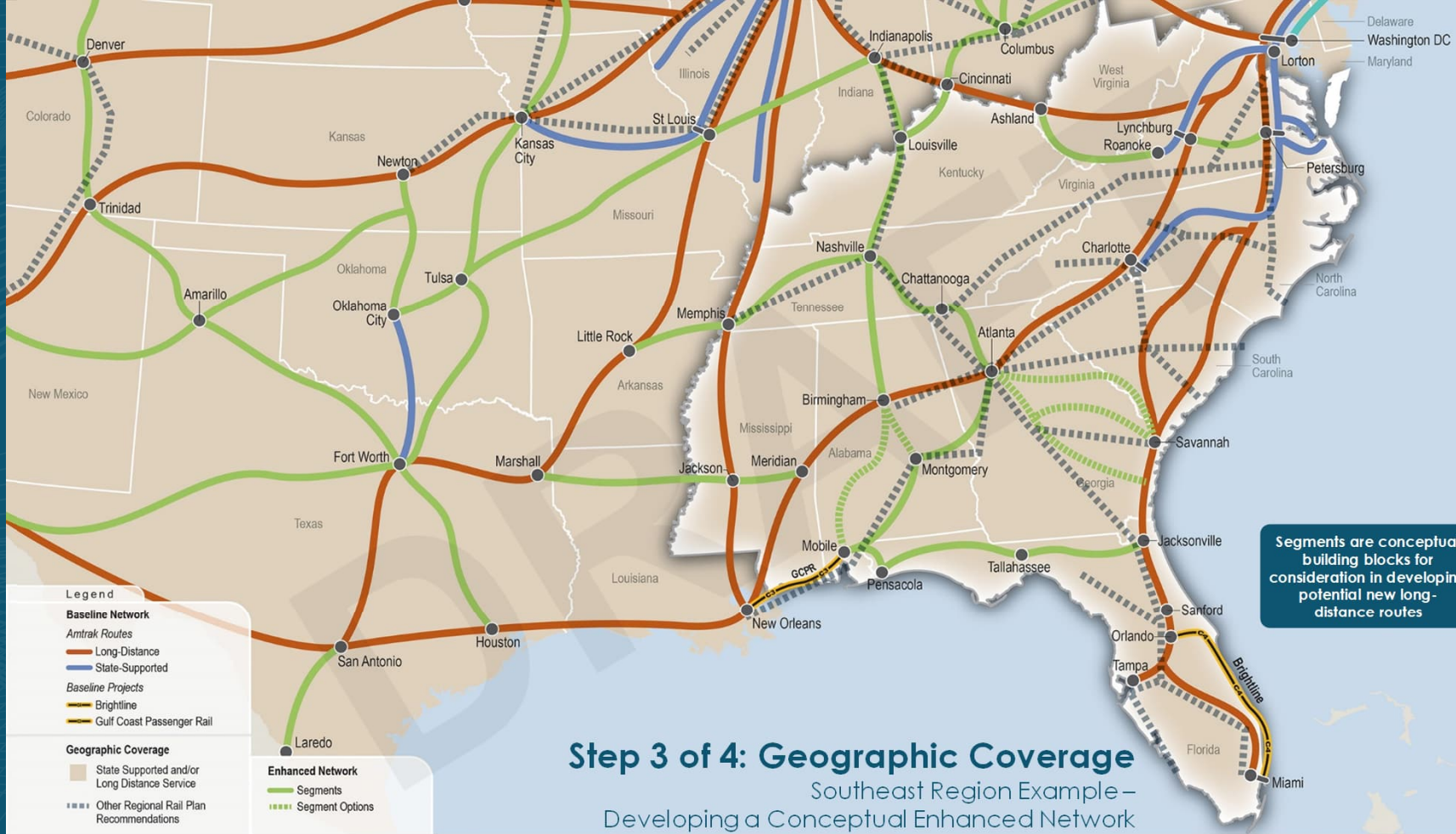
Segments are conceptual building blocks for consideration in developing potential new long-distance routes

Existing Route and Station Data provided by Amtrak 2022; Baseline Projects Data provided by FRA 2023

STEP 3 OF 4: GEOGRAPHIC COVERAGE REGIONAL EXAMPLES







STEP 4 – STAKEHOLDER INPUT

Top Places Suggested by Stakeholders



○ Top suggested places

Legend

Baseline Network

Amtrak Routes

- Long-Distance
- Northeast Corridor
- State-Supported

Baseline Projects

- Brightline
- Gulf Coast Passenger Rail
- Twin Cities-Milwaukee-Chicago
- CAHSR MOS

Enhanced Network

- Rail Corridors
- Rail Corridor Options



Segments are conceptual building blocks for consideration in developing potential new long-distance routes