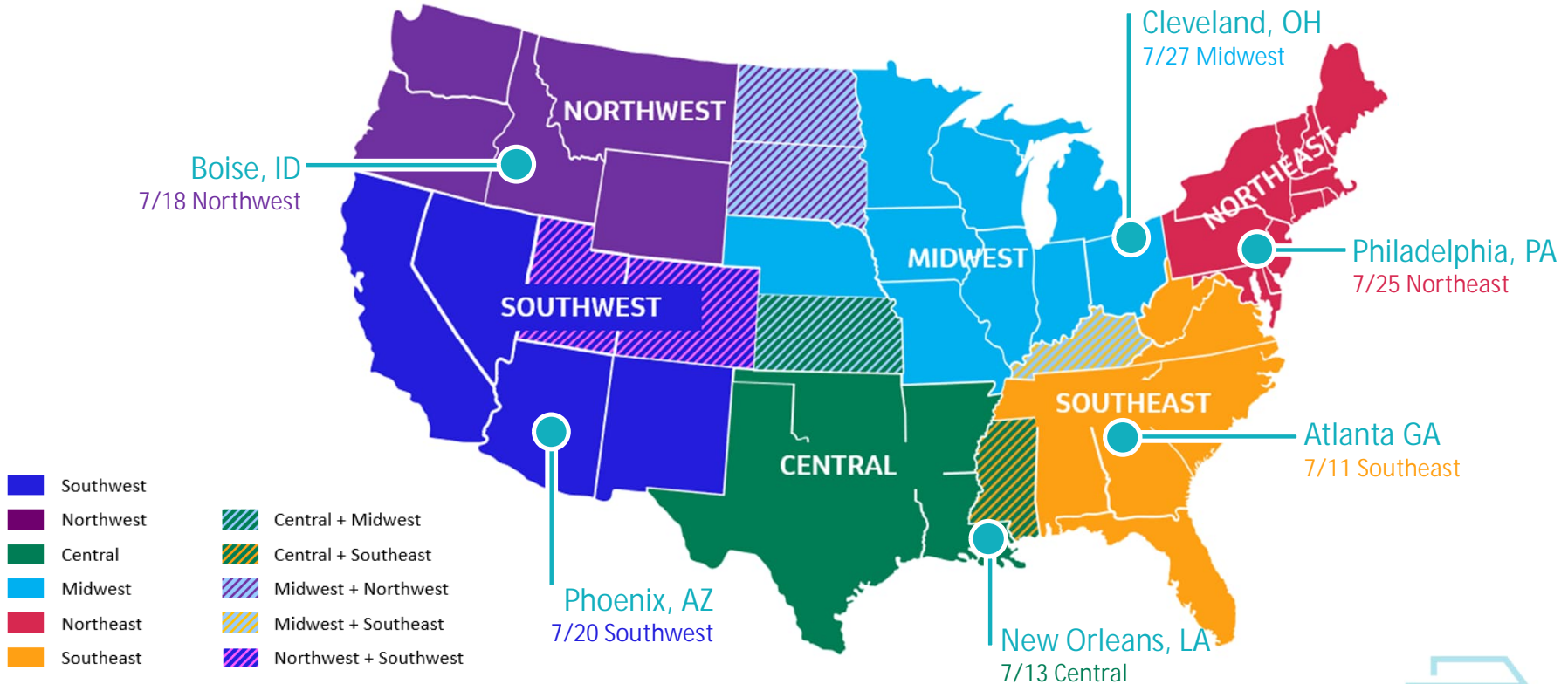




Northeast Working Group Meeting 2 – Regional Enhanced Network Development Slides

July 25, 2023

Long-Distance Service Study Regions: Stakeholder Group Meetings



STEP 1 – METROPOLITAN AREA TRAVEL FLOWS

Step 1 of 4: Metropolitan Area Travel Flows

Developing a Conceptual Enhanced Network



Segments are conceptual building blocks for consideration in developing potential new long-distance routes

Legend

Baseline Network

- Amtrak Routes
- Long-Distance
- Northeast Corridor
- State-Supported

Baseline Projects

- Brightline
- Gulf Coast Passenger Rail
- Twin Cities–Milwaukee–Chicago
- CAHSR MOS

Enhanced Network

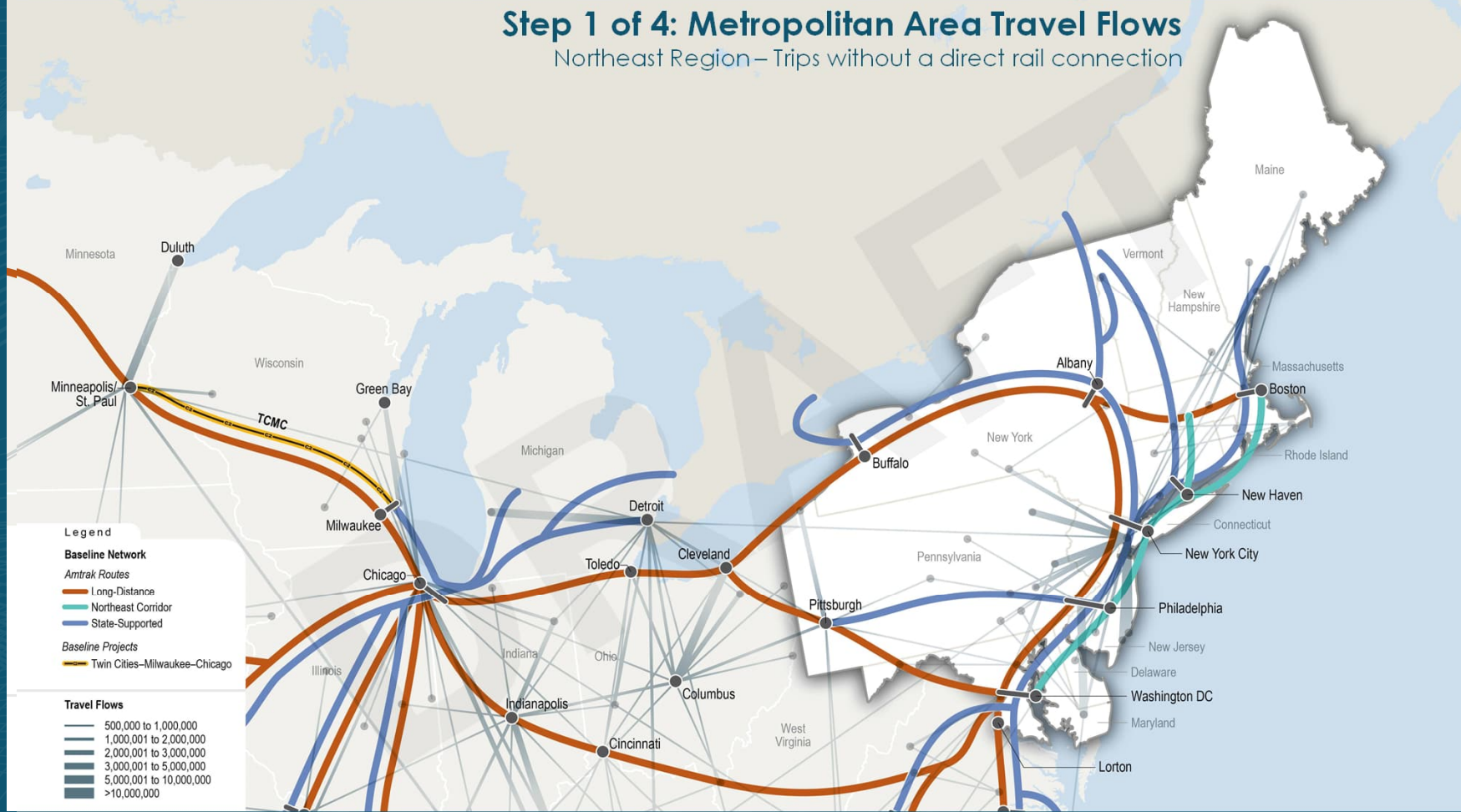
- Segments
- - - Segment Options

Existing Route and Station Data provided by Amtrak 2022; Baseline Projects Data provided by FRA 2023

STEP 1 OF 4: METROPOLITAN AREA TRAVEL FLOWS REGIONAL EXAMPLES

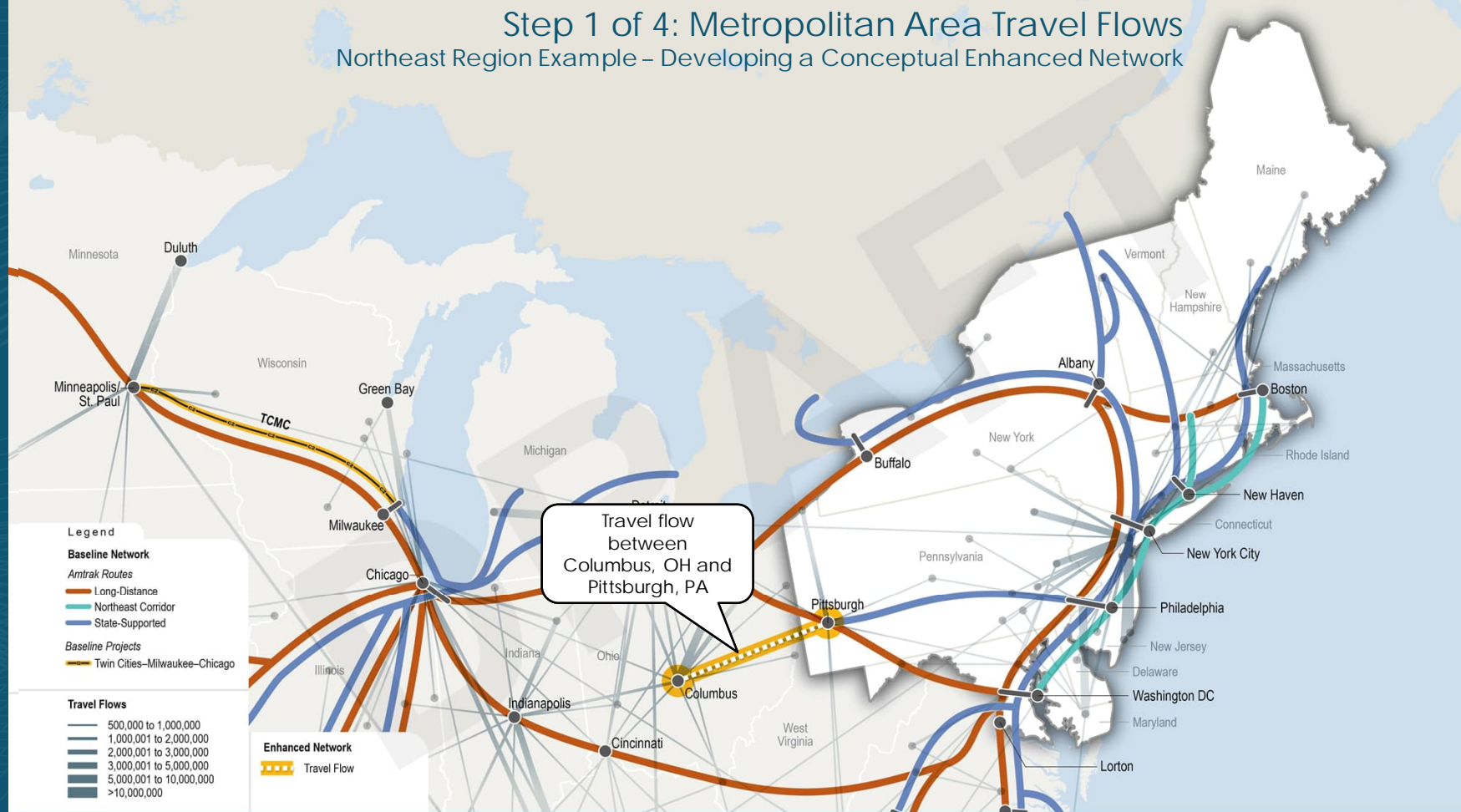
Step 1 of 4: Metropolitan Area Travel Flows

Northeast Region – Trips without a direct rail connection



Step 1 of 4: Metropolitan Area Travel Flows

Northeast Region Example – Developing a Conceptual Enhanced Network



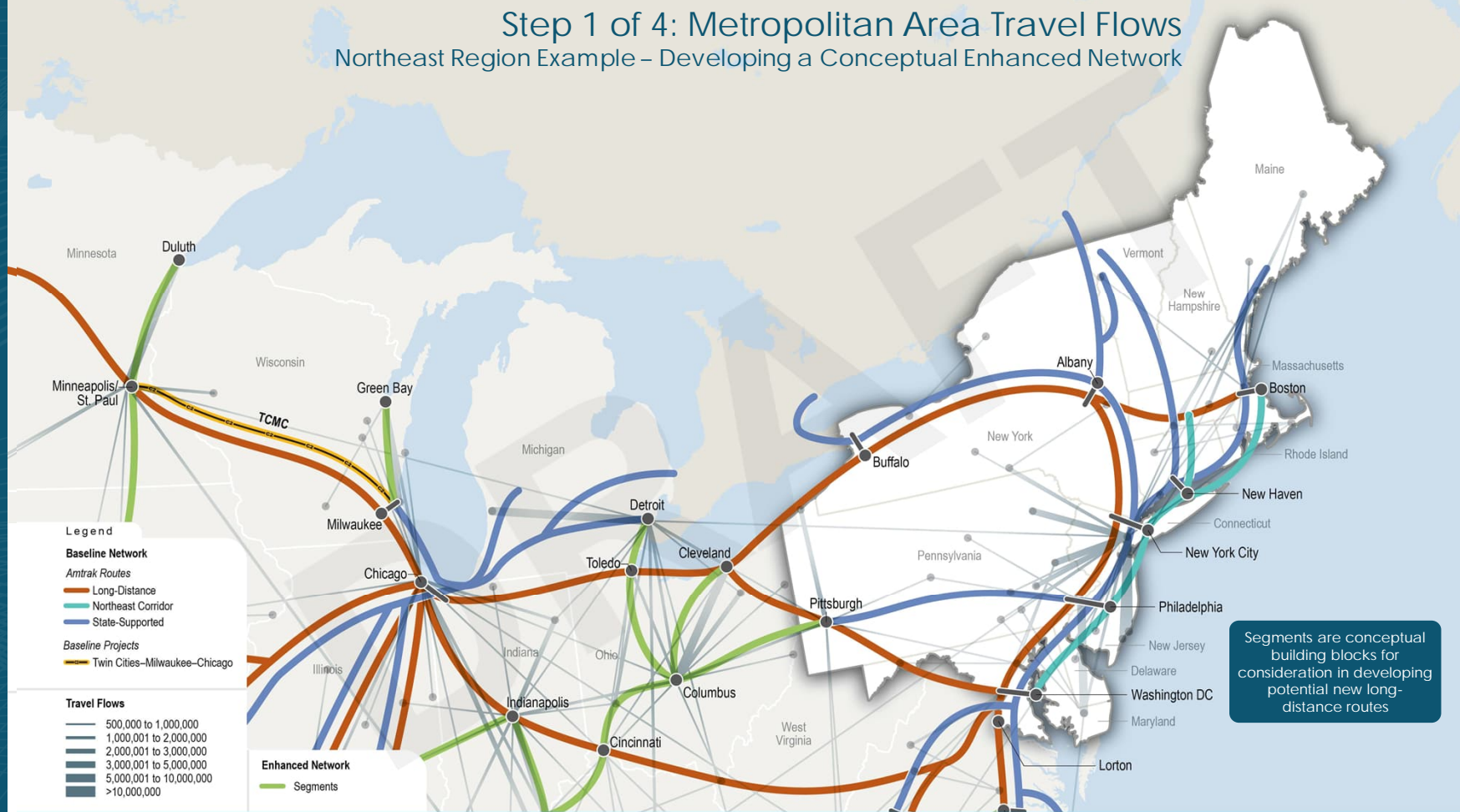
Step 1 of 4: Metropolitan Area Travel Flows

Northeast Region Example – Developing a Conceptual Enhanced Network



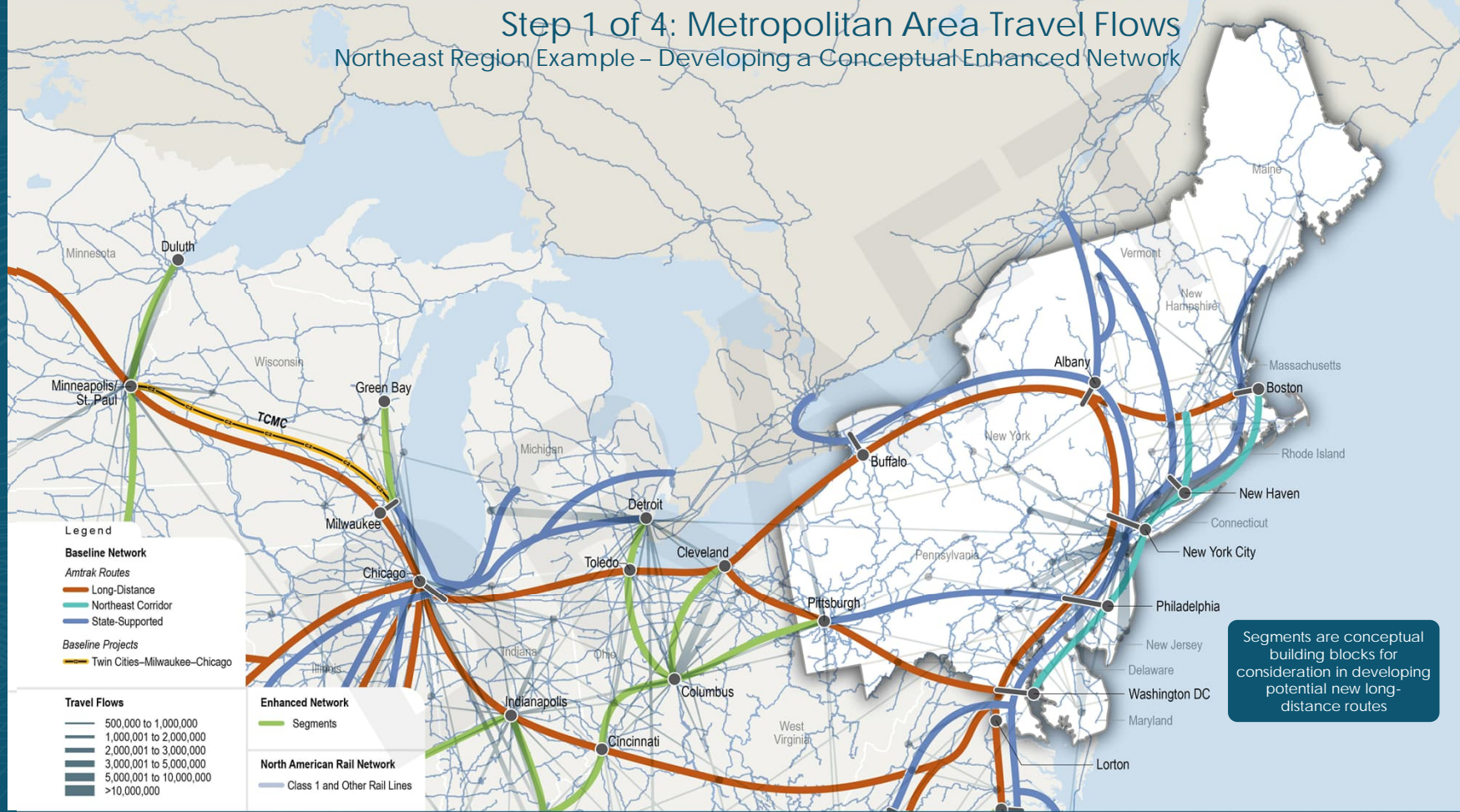
Step 1 of 4: Metropolitan Area Travel Flows

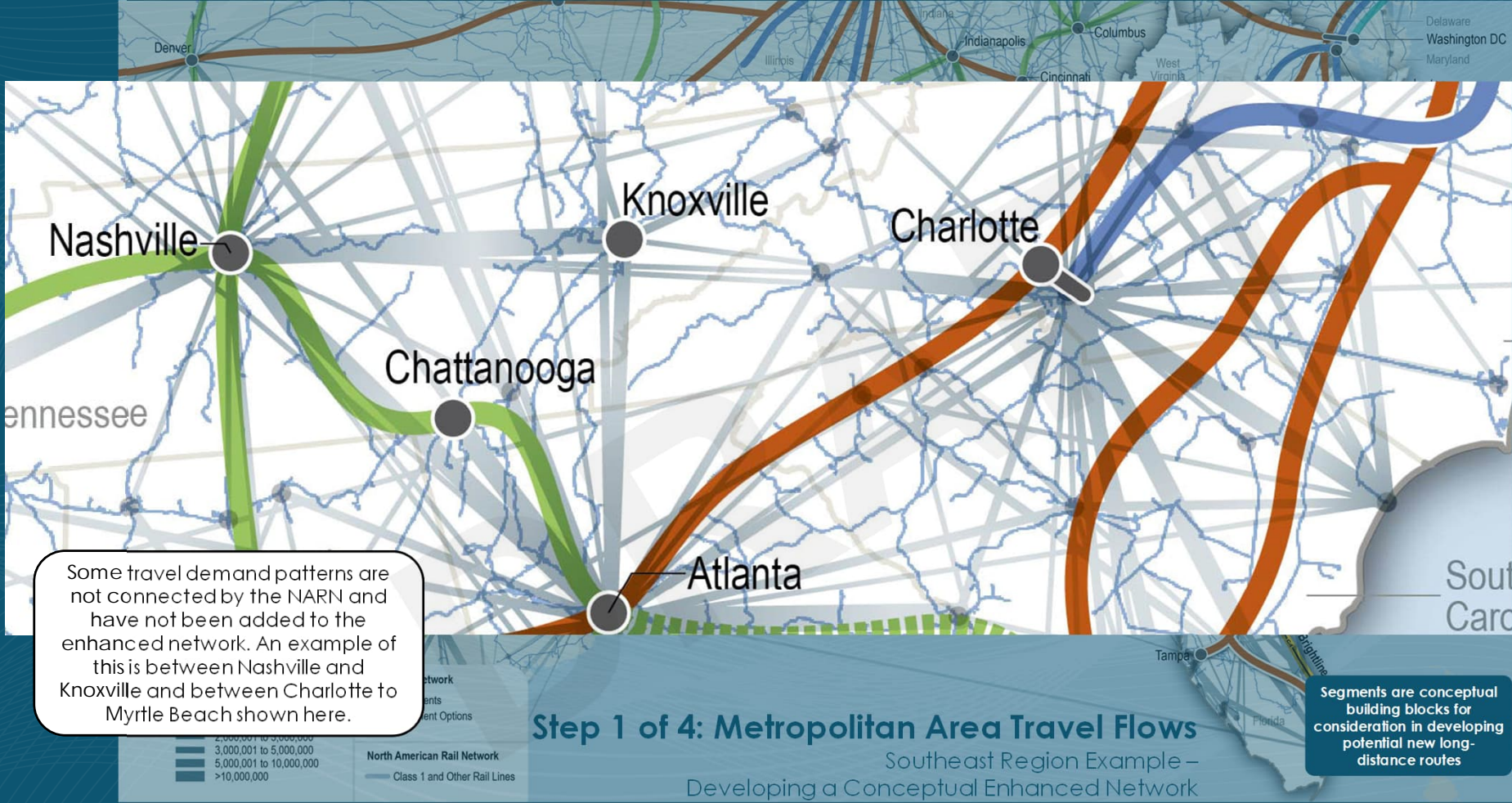
Northeast Region Example – Developing a Conceptual Enhanced Network



Step 1 of 4: Metropolitan Area Travel Flows

Northeast Region Example – Developing a Conceptual Enhanced Network





STEP 2: RURAL ACCESSIBILITY

Step 2 of 4: Rural Accessibility

Developing a Conceptual Enhanced Network



Segments are conceptual building blocks for consideration in developing potential new long-distance routes

Legend

Baseline Network

- Amtrak Routes
- Long-Distance
- Northeast Corridor
- State-Supported

Baseline Projects

- Brightline
- Gulf Coast Passenger Rail
- Twin Cities-Milwaukee-Chicago
- CAHSR MOS

Enhanced Network

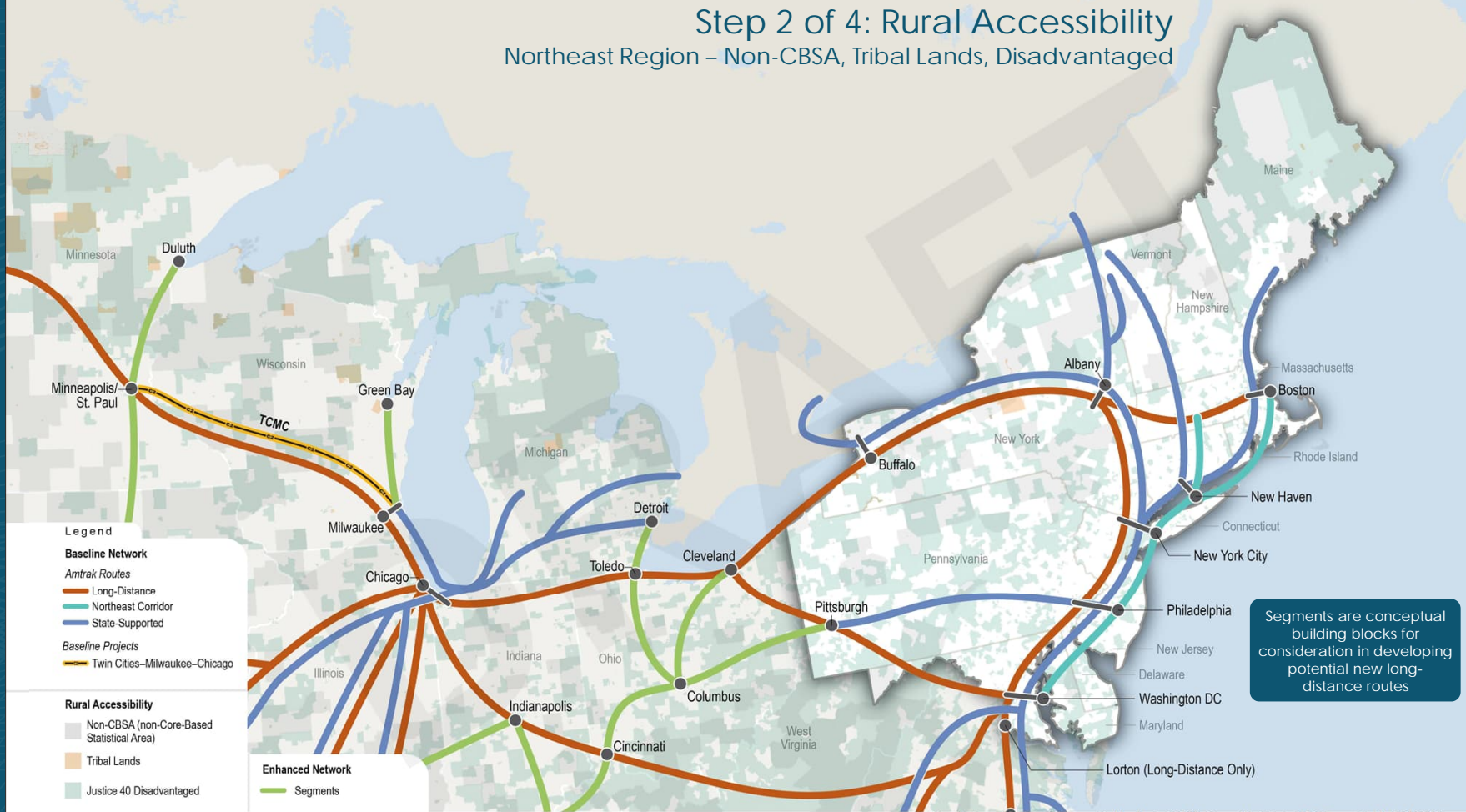
- Segments
- Segment Options



STEP 2 OF 4: RURAL ACCESSIBILITY REGIONAL EXAMPLES

Step 2 of 4: Rural Accessibility

Northeast Region – Non-CBSA, Tribal Lands, Disadvantaged



Step 2 of 4: Rural Accessibility

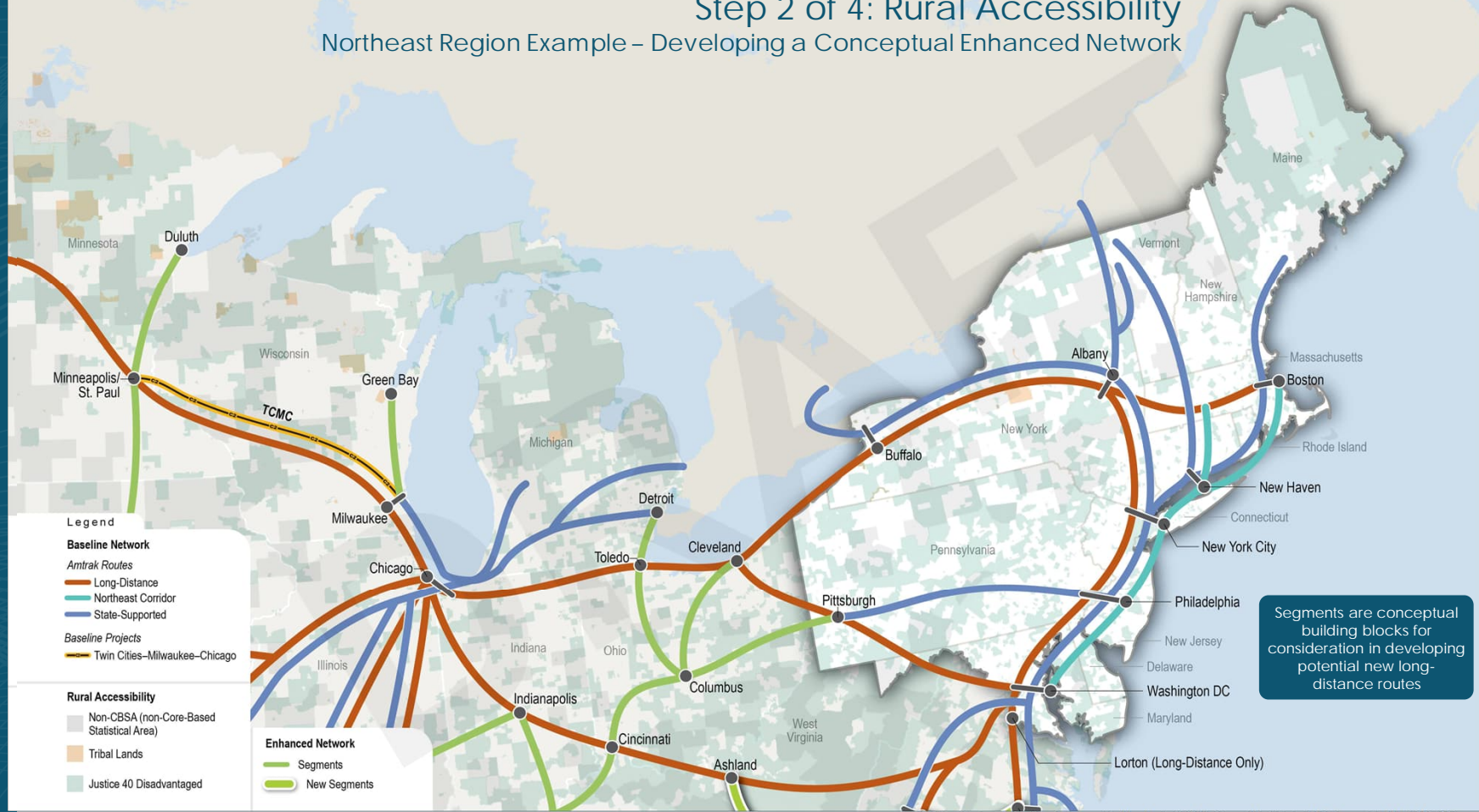
Northeast Region Example – Developing a Conceptual Enhanced Network



Existing Route and Station Data provided by Amtrak 2022; Committed Projects Data provided by FRA 2023

Step 2 of 4: Rural Accessibility

Northeast Region Example – Developing a Conceptual Enhanced Network



Existing Route and Station Data provided by Amtrak 2022; Committed Projects Data provided by FRA 2023

STEP 3 – GEOGRAPHIC COVERAGE/NETWORK CONNECTIVITY

Step 3 of 4: Geographic Coverage

Developing a Conceptual Enhanced Network

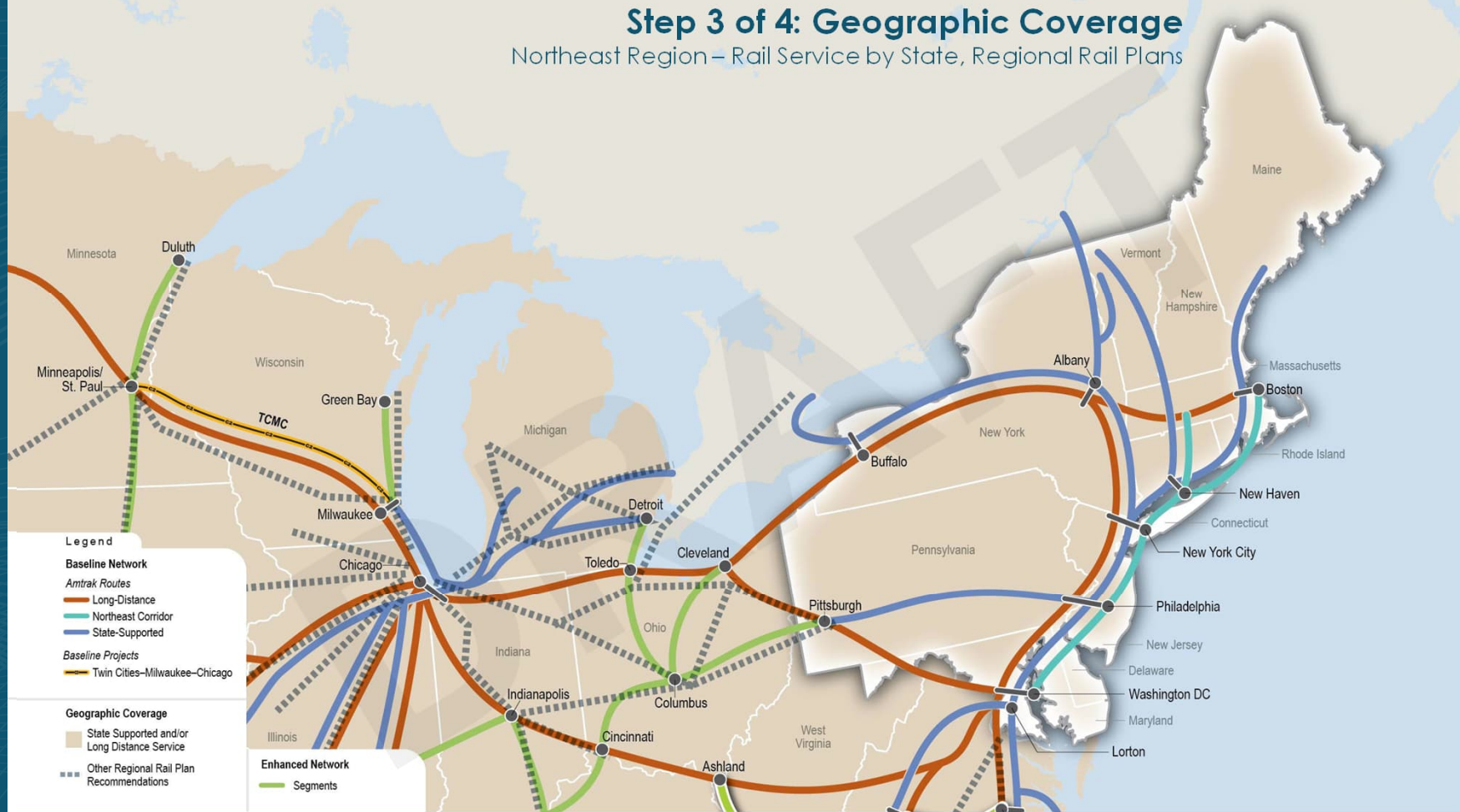


Existing Route and Station Data provided by Amtrak 2022; Baseline Projects Data provided by FRA 2023

STEP 3 OF 4: GEOGRAPHIC COVERAGE REGIONAL EXAMPLES

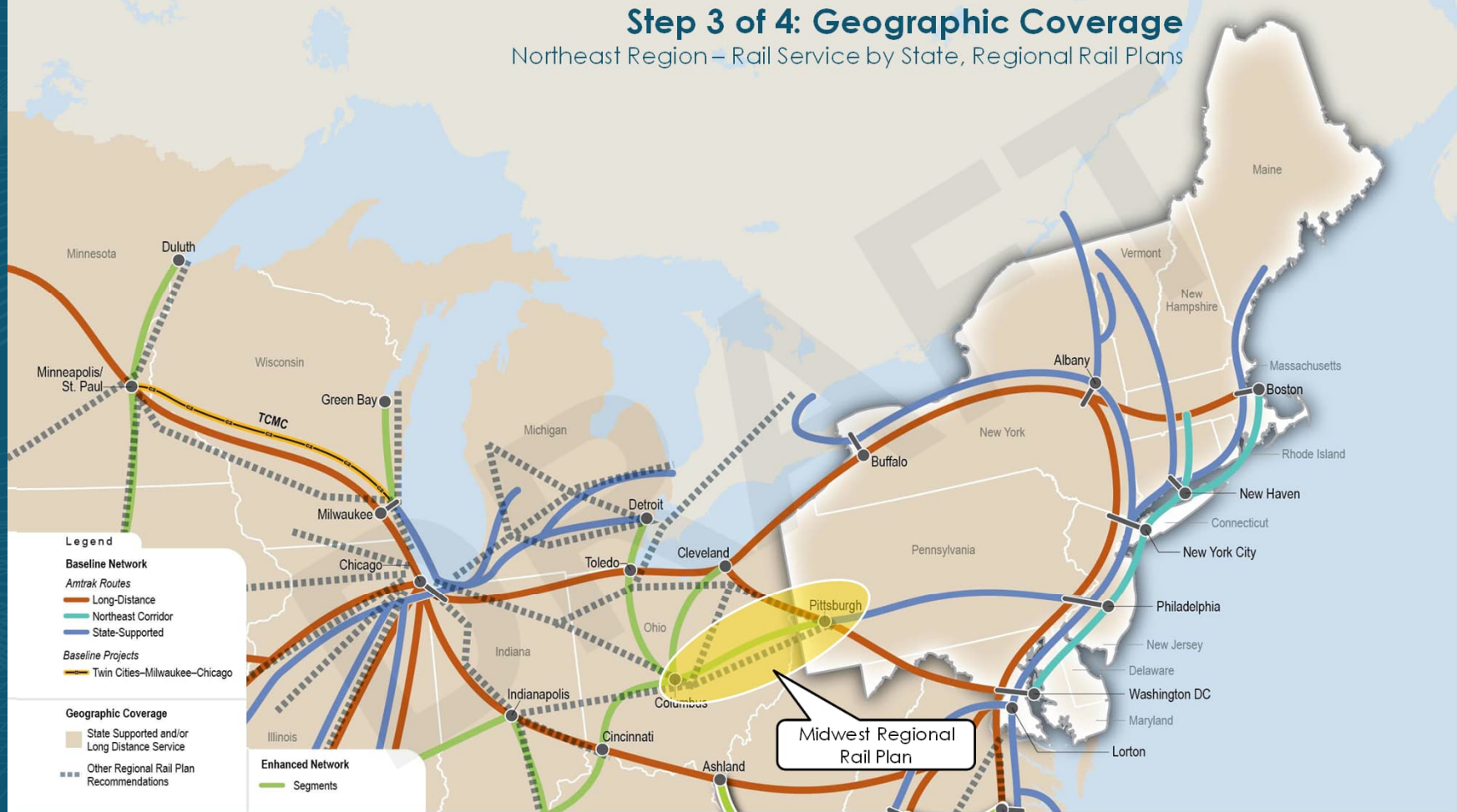
Step 3 of 4: Geographic Coverage

Northeast Region – Rail Service by State, Regional Rail Plans



Step 3 of 4: Geographic Coverage

Northeast Region – Rail Service by State, Regional Rail Plans



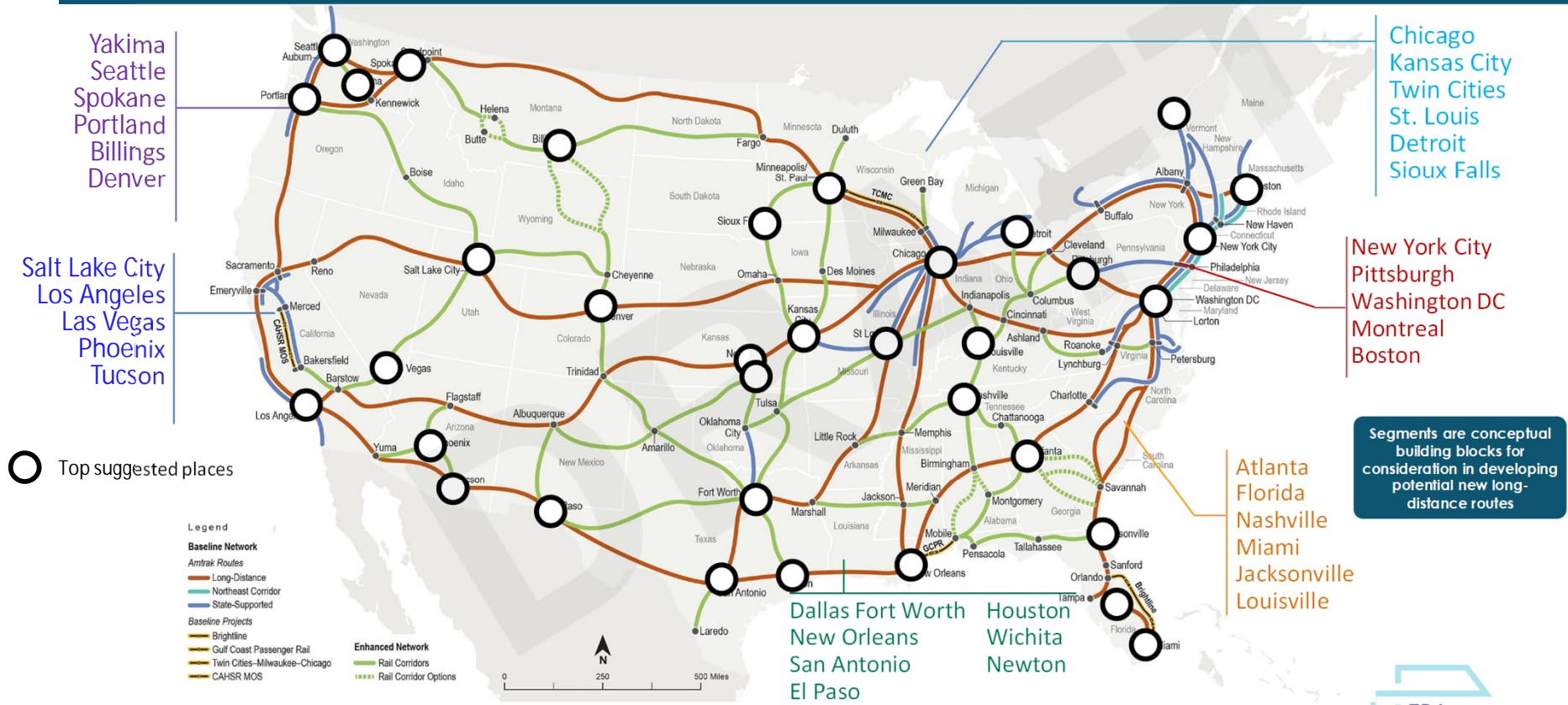
Step 3 of 4: Geographic Coverage

Northeast Region – Developing a Conceptual Enhanced Network



STEP 4 – STAKEHOLDER INPUT

Step 4 of 4: Top Places Suggested by Stakeholders



Segments are conceptual building blocks for consideration in developing potential new long-distance routes