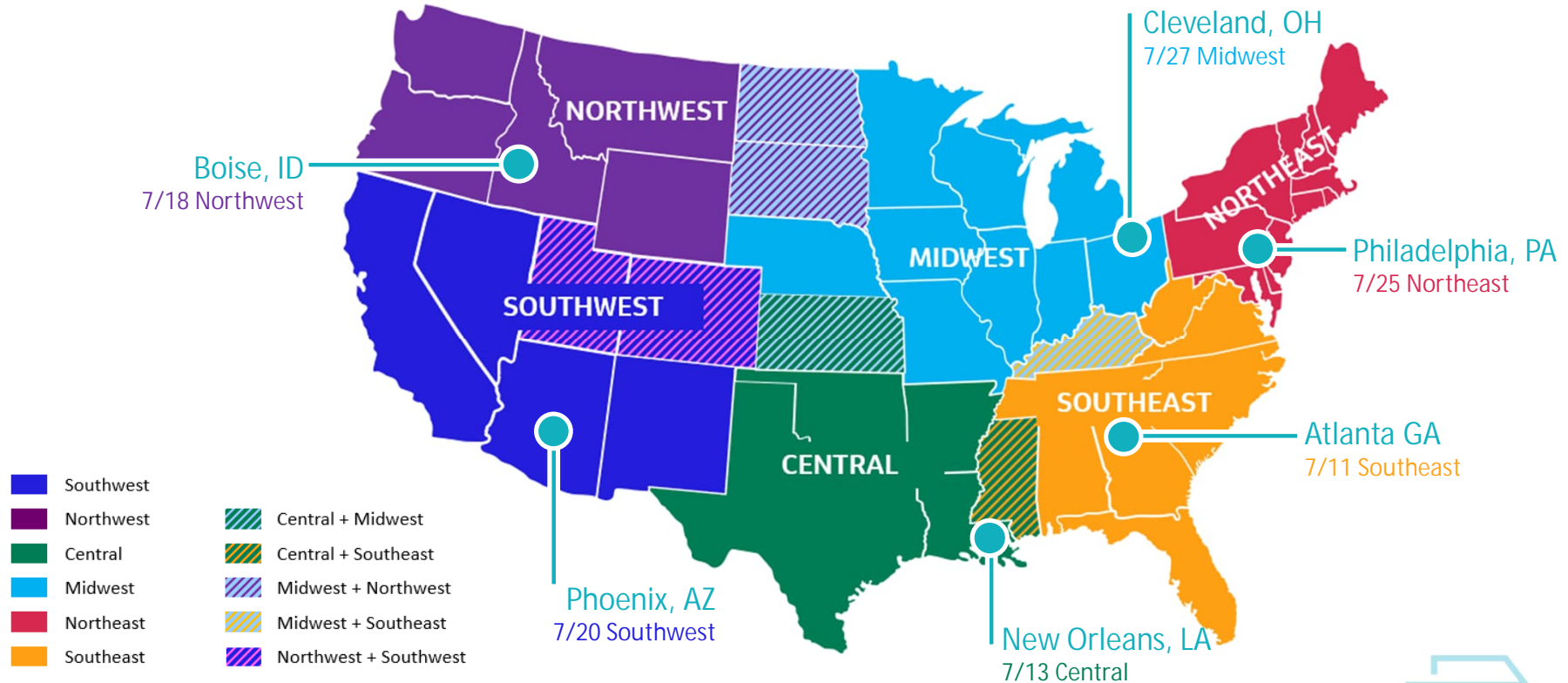




Midwest Working Group Meeting 2 – Regional Enhanced Network Development Slides

July 27, 2023

Long-Distance Service Study Regions: Stakeholder Group Meetings



STEP 1 – METROPOLITAN AREA TRAVEL FLOWS

Step 1 of 4: Metropolitan Area Travel Flows

Developing a Conceptual Enhanced Network



Legend

Baseline Network

- Amtrak Routes
- Long-Distance
- Northeast Corridor
- State-Supported

Baseline Projects

- Brightline
- Gulf Coast Passenger Rail
- Twin Cities-Milwaukee-Chicago
- CAHSR MOS

Enhanced Network

- Segments
- - - Segment Options

Segments are conceptual building blocks for consideration in developing potential new long-distance routes

STEP 1 OF 4: METROPOLITAN AREA TRAVEL FLOWS REGIONAL EXAMPLES

Step 1 of 4: Metropolitan Area Travel Flows

Midwest Region – Trips without a direct rail connection



Step 1 of 4: Metropolitan Area Travel Flows

Midwest Region Example – Developing a Conceptual Enhanced Network

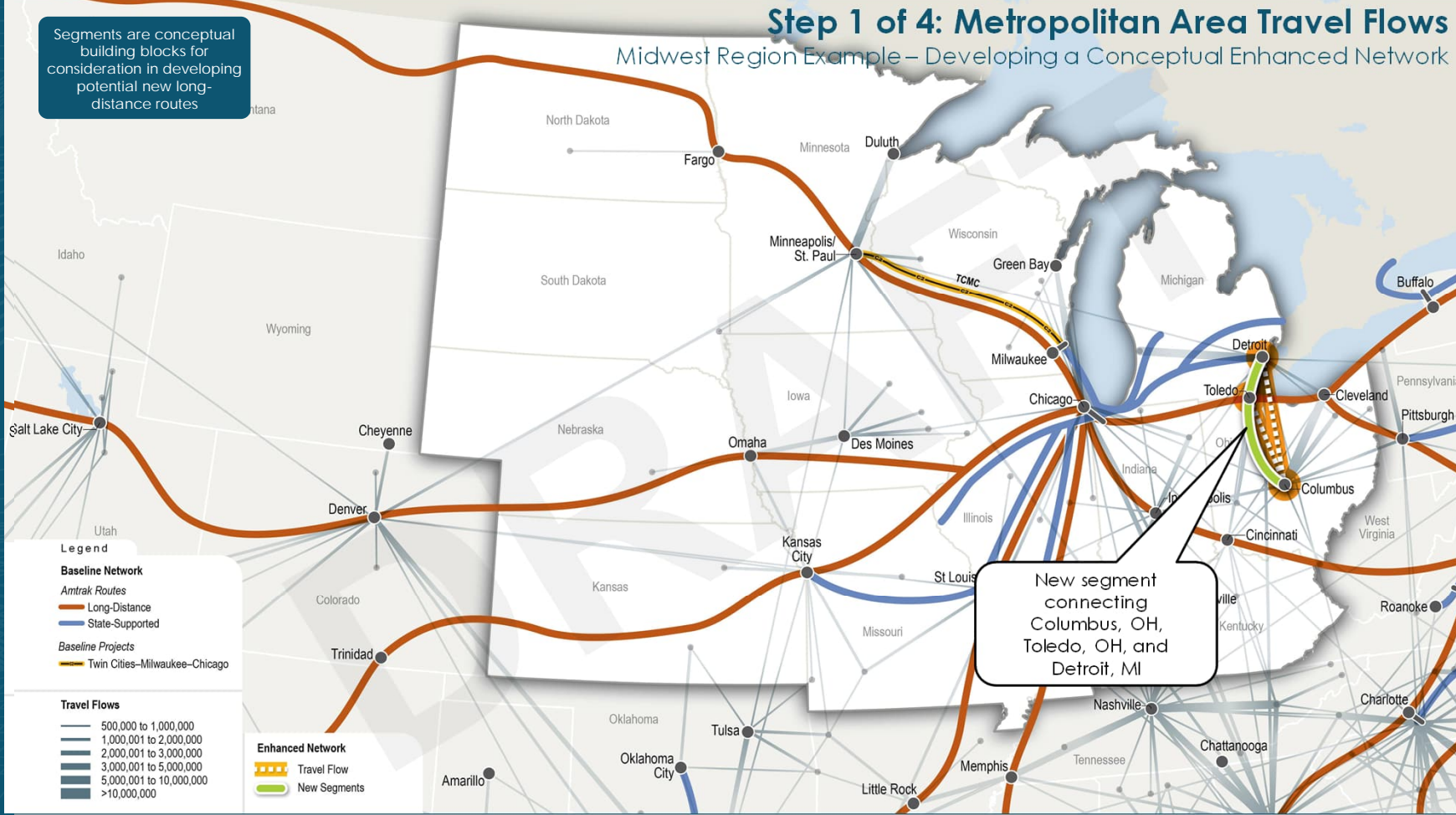


Travel flows between Columbus, OH, Toledo, OH, and Detroit, MI

Step 1 of 4: Metropolitan Area Travel Flows

Midwest Region Example – Developing a Conceptual Enhanced Network

Segments are conceptual building blocks for consideration in developing potential new long-distance routes



- Legend**
- Baseline Network**
- Amtrak Routes
 - Long-Distance
 - State-Supported
 - Baseline Projects
 - Twin Cities–Milwaukee–Chicago

- Travel Flows**
- 500,000 to 1,000,000
 - 1,000,001 to 2,000,000
 - 2,000,001 to 3,000,000
 - 3,000,001 to 5,000,000
 - 5,000,001 to 10,000,000
 - >10,000,000

- Enhanced Network**
- Travel Flow
 - New Segments

New segment connecting Columbus, OH, Toledo, OH, and Detroit, MI

Step 1 of 4: Metropolitan Area Travel Flows

Midwest Region Example – Developing a Conceptual Enhanced Network

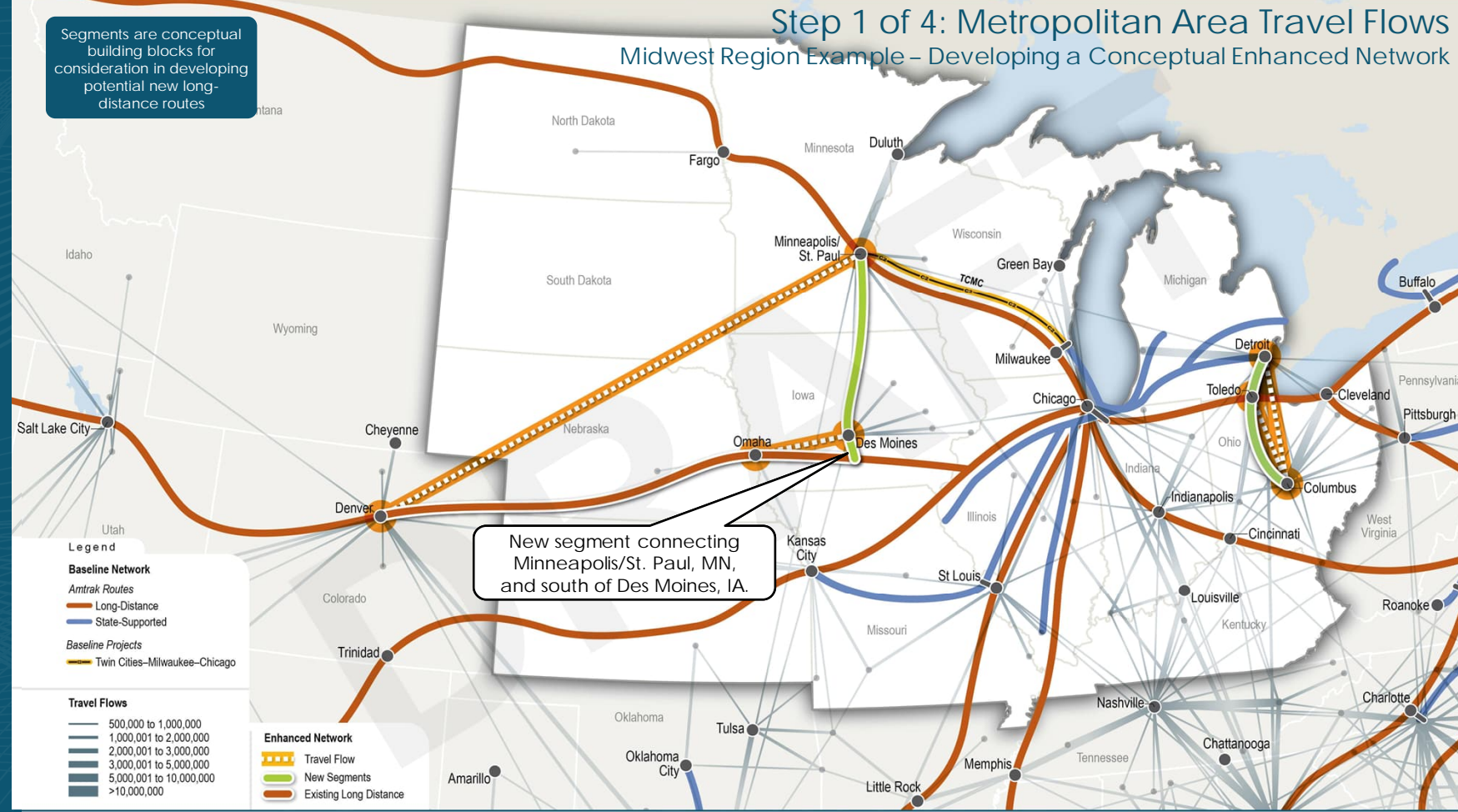
Segments are conceptual building blocks for consideration in developing potential new long-distance routes



Step 1 of 4: Metropolitan Area Travel Flows

Midwest Region Example – Developing a Conceptual Enhanced Network

Segments are conceptual building blocks for consideration in developing potential new long-distance routes



- Legend**
- Baseline Network**
- Amtrak Routes
 - Long-Distance
 - State-Supported
 - Baseline Projects
 - Twin Cities–Milwaukee–Chicago

- Travel Flows**
- 500,000 to 1,000,000
 - 1,000,001 to 2,000,000
 - 2,000,001 to 3,000,000
 - 3,000,001 to 5,000,000
 - 5,000,001 to 10,000,000
 - >10,000,000

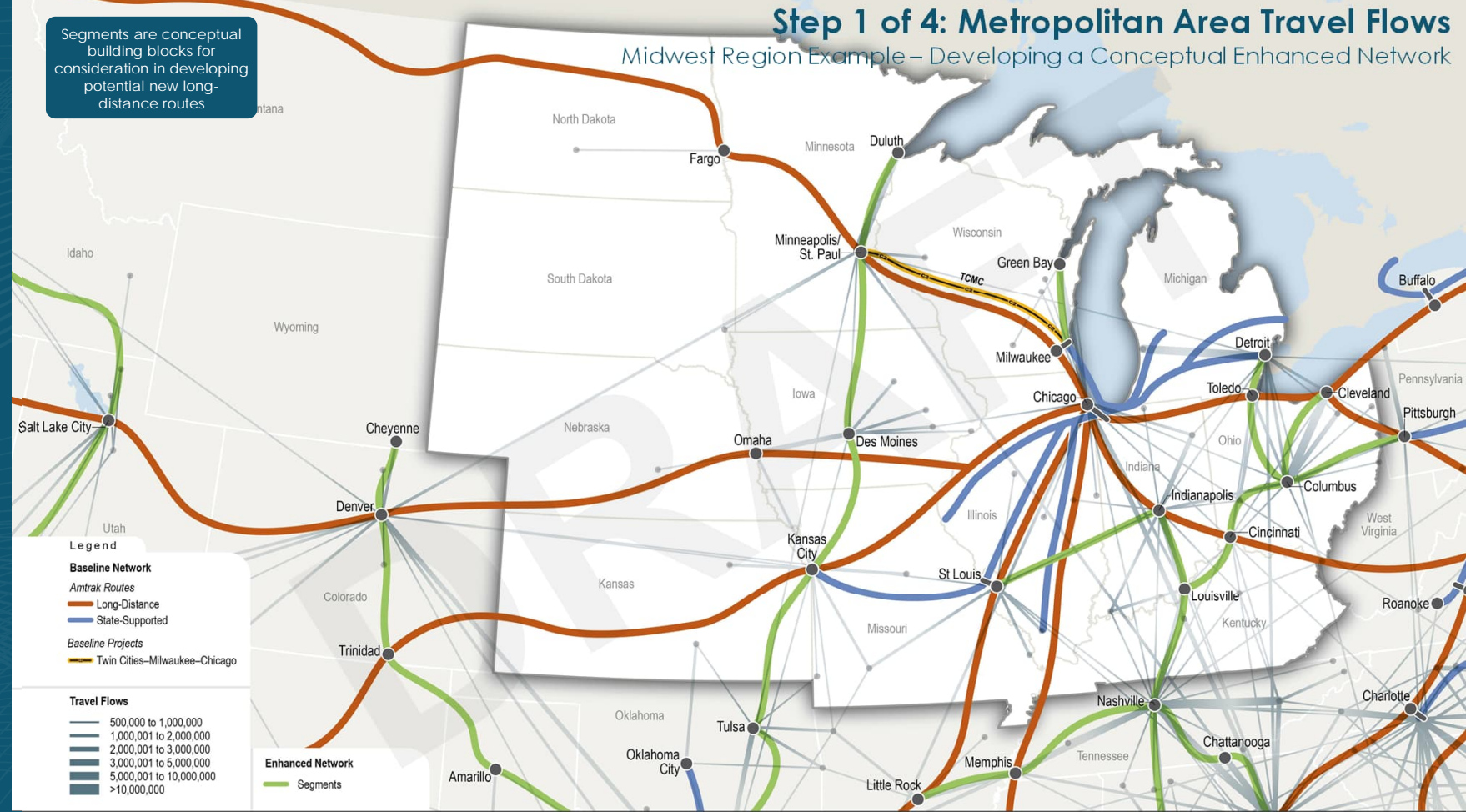
- Enhanced Network**
- Travel Flow
 - New Segments
 - Existing Long Distance

New segment connecting Minneapolis/St. Paul, MN, and south of Des Moines, IA.

Step 1 of 4: Metropolitan Area Travel Flows

Midwest Region Example – Developing a Conceptual Enhanced Network

Segments are conceptual building blocks for consideration in developing potential new long-distance routes



Legend

Baseline Network

- Amtrak Routes
 - Long-Distance (Orange line)
 - State-Supported (Blue line)
- Baseline Projects
 - Twin Cities-Milwaukee-Chicago (Yellow line)

Travel Flows

- 500,000 to 1,000,000 (Thinest line)
- 1,000,001 to 2,000,000
- 2,000,001 to 3,000,000
- 3,000,001 to 5,000,000
- 5,000,001 to 10,000,000
- >10,000,000 (Thickest line)

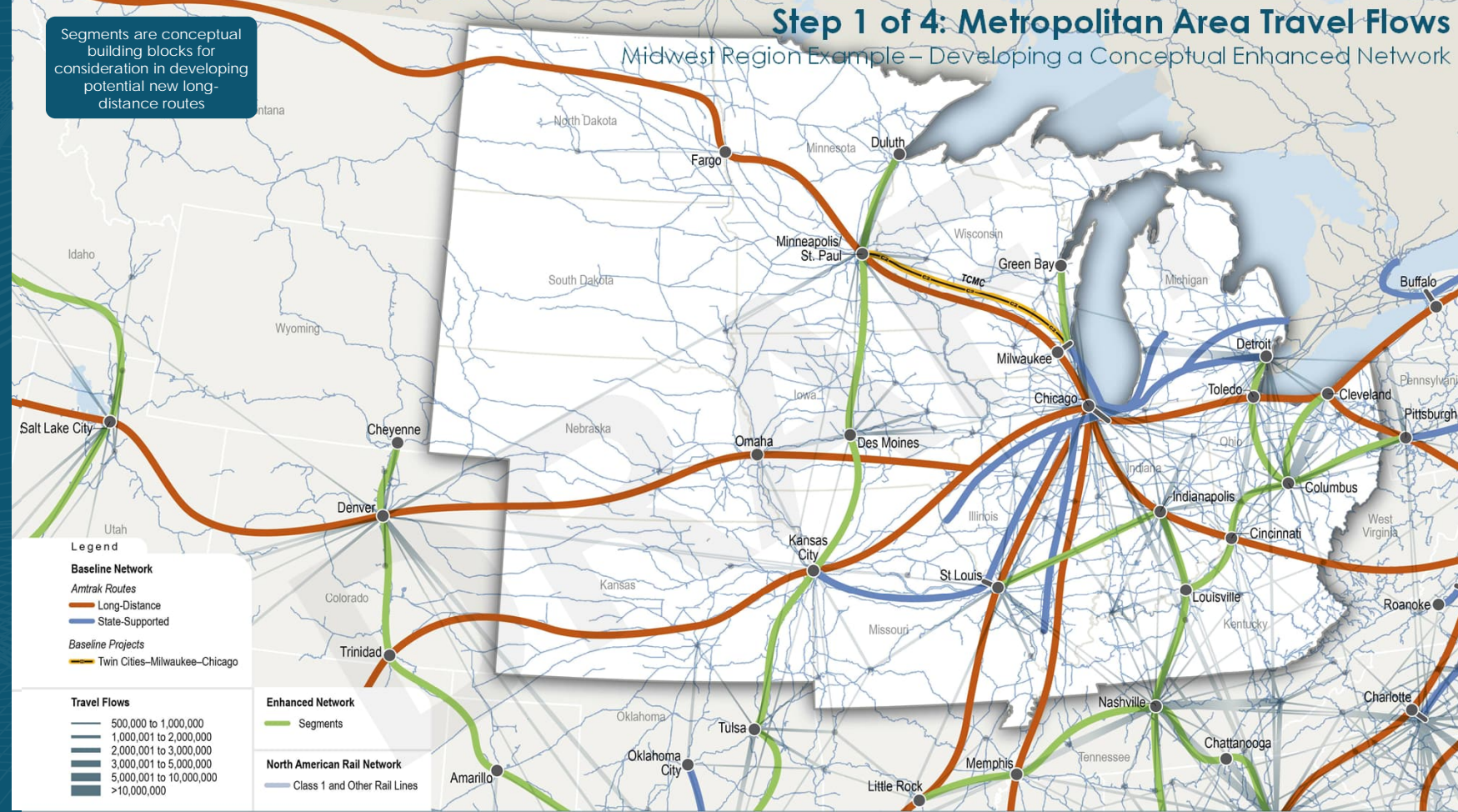
Enhanced Network

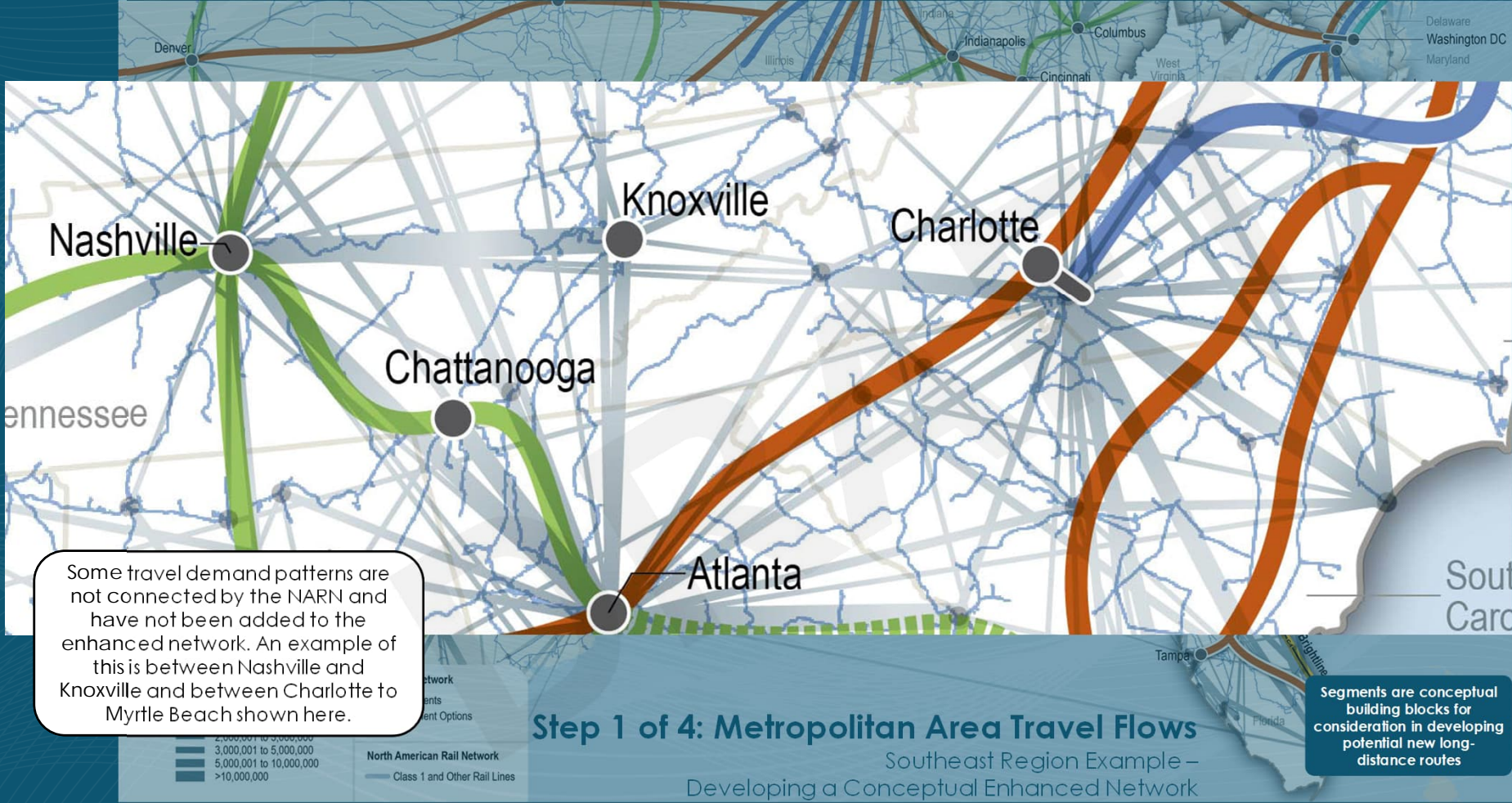
- Segments (Green line)

Step 1 of 4: Metropolitan Area Travel Flows

Midwest Region Example – Developing a Conceptual Enhanced Network

Segments are conceptual building blocks for consideration in developing potential new long-distance routes





STEP 2: RURAL ACCESSIBILITY

Step 2 of 4: Rural Accessibility

Developing a Conceptual Enhanced Network



Legend

Baseline Network

Amtrak Routes

Long-Distance

Northeast Corridor

State-Supported

Baseline Projects

Brightline

Gulf Coast Passenger Rail

Twin Cities-Milwaukee-Chicago

CAHSR MOS

Enhanced Network

Segments

Segment Options

Segments are conceptual building blocks for consideration in developing potential new long-distance routes

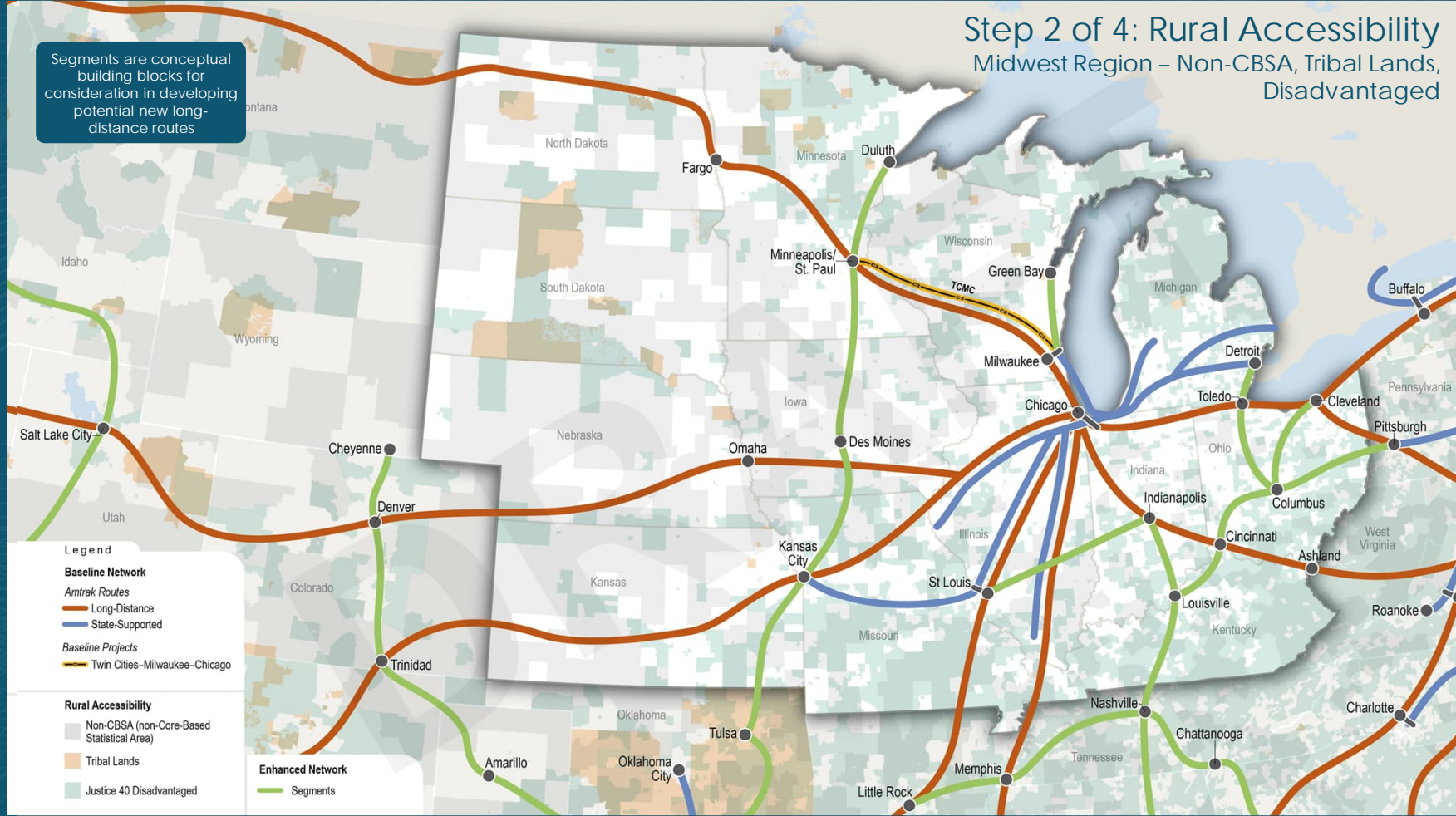
Existing Route and Station Data provided by Amtrak 2022; Baseline Projects Data provided by FRA 2023

STEP 2 OF 4: RURAL ACCESSIBILITY REGIONAL EXAMPLES

Step 2 of 4: Rural Accessibility

Midwest Region – Non-CBSA, Tribal Lands, Disadvantaged

Segments are conceptual building blocks for consideration in developing potential new long-distance routes



- Legend**
- Baseline Network**
- Amtrak Routes
 - Long-Distance
 - State-Supported
- Baseline Projects**
- Twin Cities-Milwaukee-Chicago
- Rural Accessibility**
- Non-CBSA (non-Core-Based Statistical Area)
 - Tribal Lands
 - Justice 40 Disadvantaged
- Enhanced Network**
- Segments

Existing Route and Station Data provided by Amtrak 2022; Committed Projects Data provided by FRA 2023

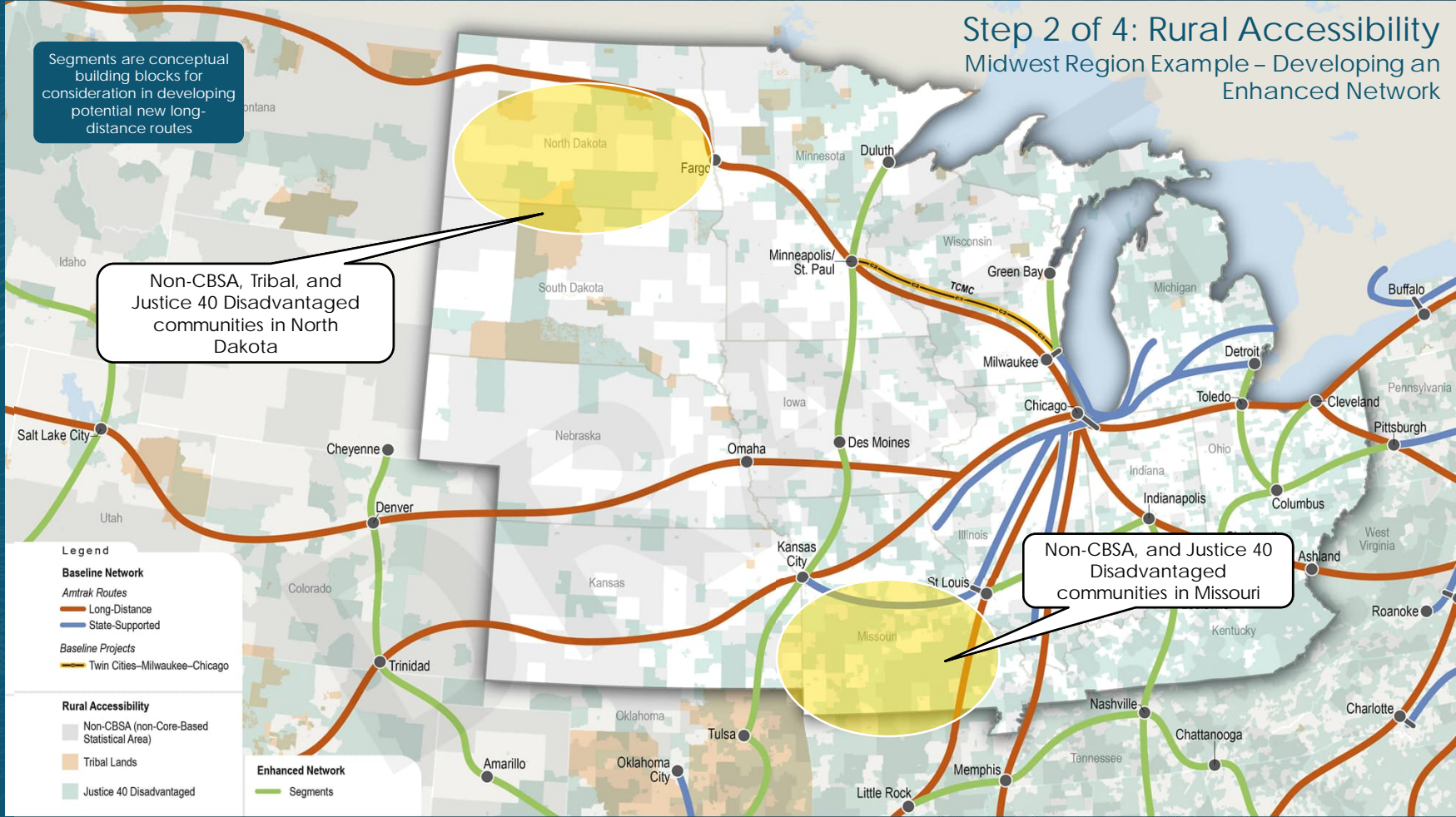
Step 2 of 4: Rural Accessibility

Midwest Region Example – Developing an Enhanced Network

Segments are conceptual building blocks for consideration in developing potential new long-distance routes

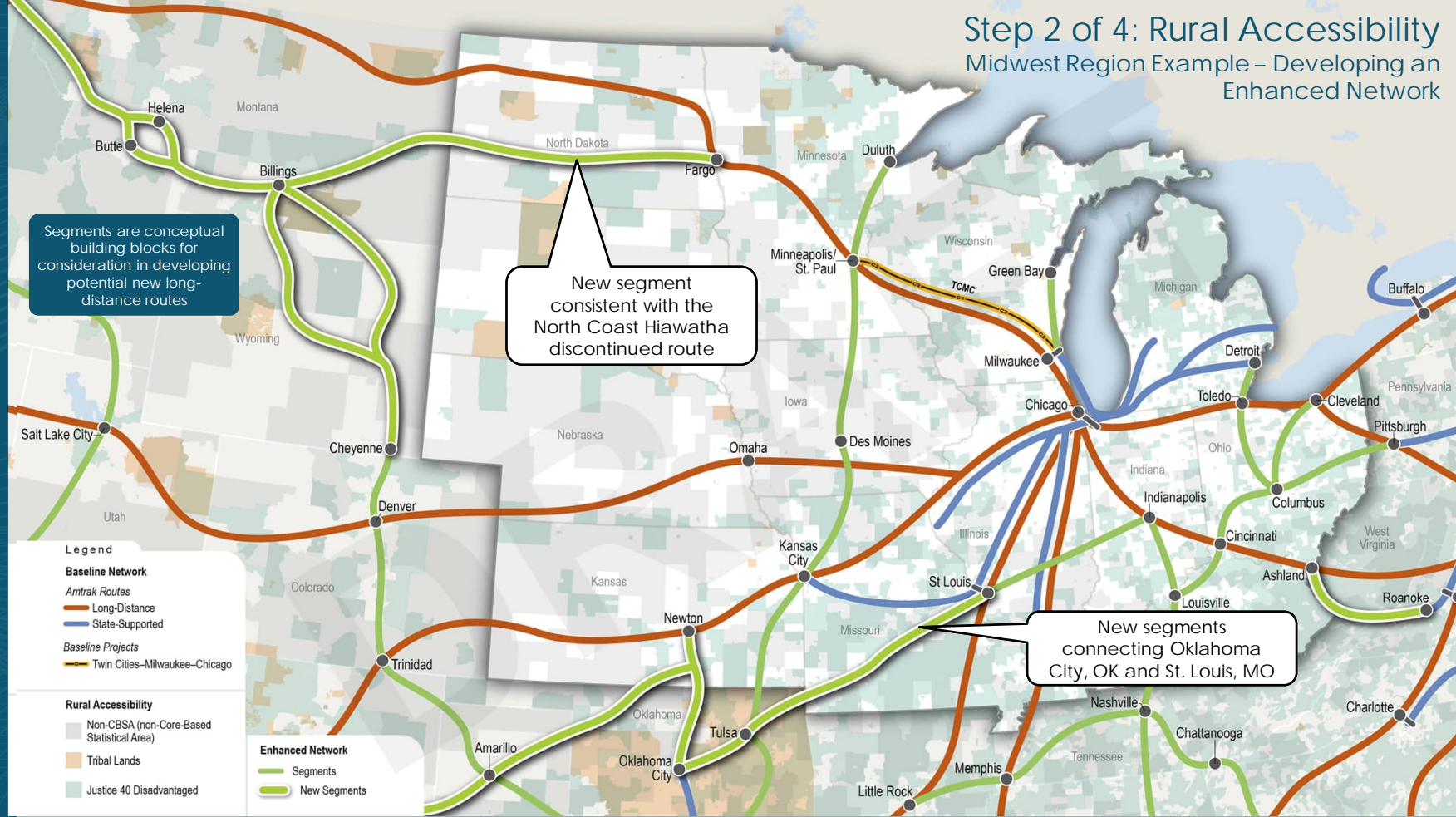
Non-CBSA, Tribal, and Justice 40 Disadvantaged communities in North Dakota

Non-CBSA, and Justice 40 Disadvantaged communities in Missouri



Step 2 of 4: Rural Accessibility

Midwest Region Example – Developing an Enhanced Network



Existing Route and Station Data provided by Amtrak 2022; Committed Projects Data provided by FRA 2023

STEP 3 – GEOGRAPHIC COVERAGE/NETWORK CONNECTIVITY

Step 3 of 4: Geographic Coverage

Developing a Conceptual Enhanced Network



Legend

Baseline Network

Amtrak Routes

— Long-Distance

— Northeast Corridor

— State-Supported

Baseline Projects

— Brightline

— Gulf Coast Passenger Rail

— Twin Cities–Milwaukee–Chicago

— CAHSR MOS

Enhanced Network

— Segments

— Segment Options

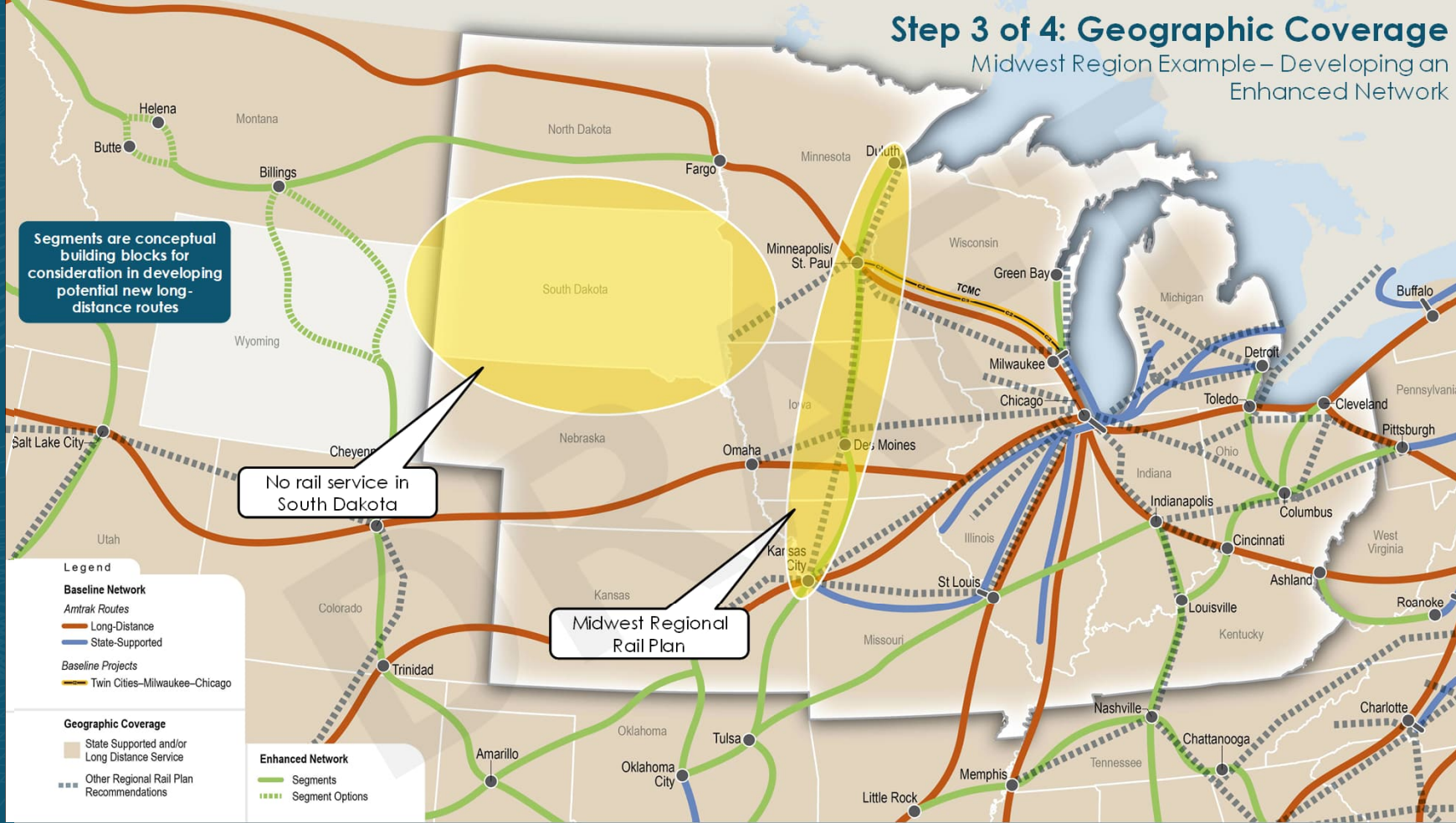
Segments are conceptual building blocks for consideration in developing potential new long-distance routes

Existing Route and Station Data provided by Amtrak 2022; Baseline Projects Data provided by FRA 2023

STEP 3 OF 4: GEOGRAPHIC COVERAGE REGIONAL EXAMPLES

Step 3 of 4: Geographic Coverage

Midwest Region Example – Developing an Enhanced Network



Segments are conceptual building blocks for consideration in developing potential new long-distance routes

No rail service in South Dakota

Midwest Regional Rail Plan

- Legend**
- Baseline Network**
 - Amtrak Routes
 - Long-Distance
 - State-Supported
 - Baseline Projects**
 - Twin Cities-Milwaukee-Chicago
 - Geographic Coverage**
 - State Supported and/or Long Distance Service
 - Other Regional Rail Plan Recommendations

- Enhanced Network**
- Segments
 - Segment Options

Step 3 of 4: Geographic Coverage

Midwest Region Example – Developing an Enhanced Network



STEP 4 – STAKEHOLDER INPUT

Top Places Suggested by Stakeholders



Segments are conceptual building blocks for consideration in developing potential new long-distance routes