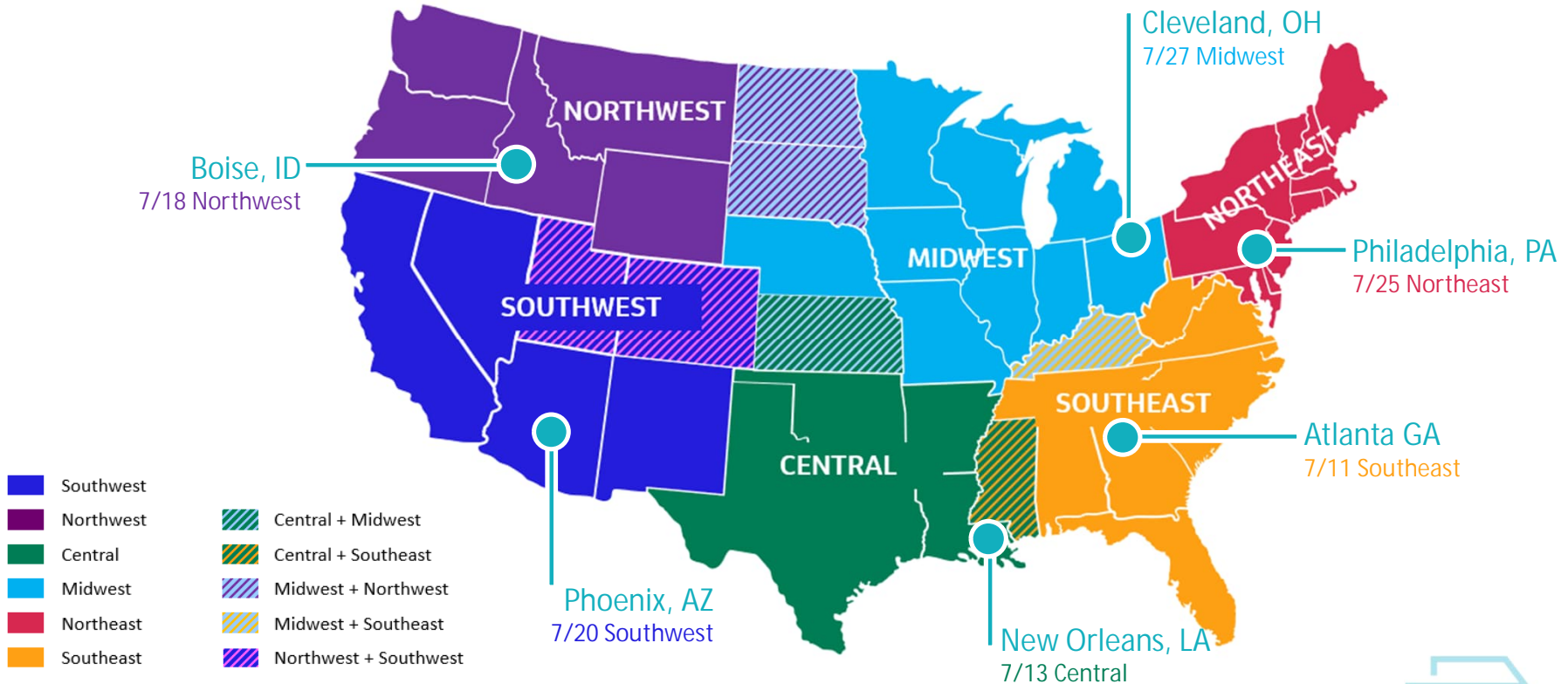




Central Working Group Meeting 2 – Regional Enhanced Network Development Slides

July 13, 2023

Long-Distance Service Study Regions: Stakeholder Group Meetings



STEP 1 – METROPOLITAN AREA TRAVEL FLOWS

Step 1 of 4: Metropolitan Area Travel Flows

Developing a Conceptual Enhanced Network



Segments are conceptual building blocks for consideration in developing potential new long-distance routes

Legend

Baseline Network

- Long-Distance
- Northeast Corridor
- State-Supported

Baseline Projects

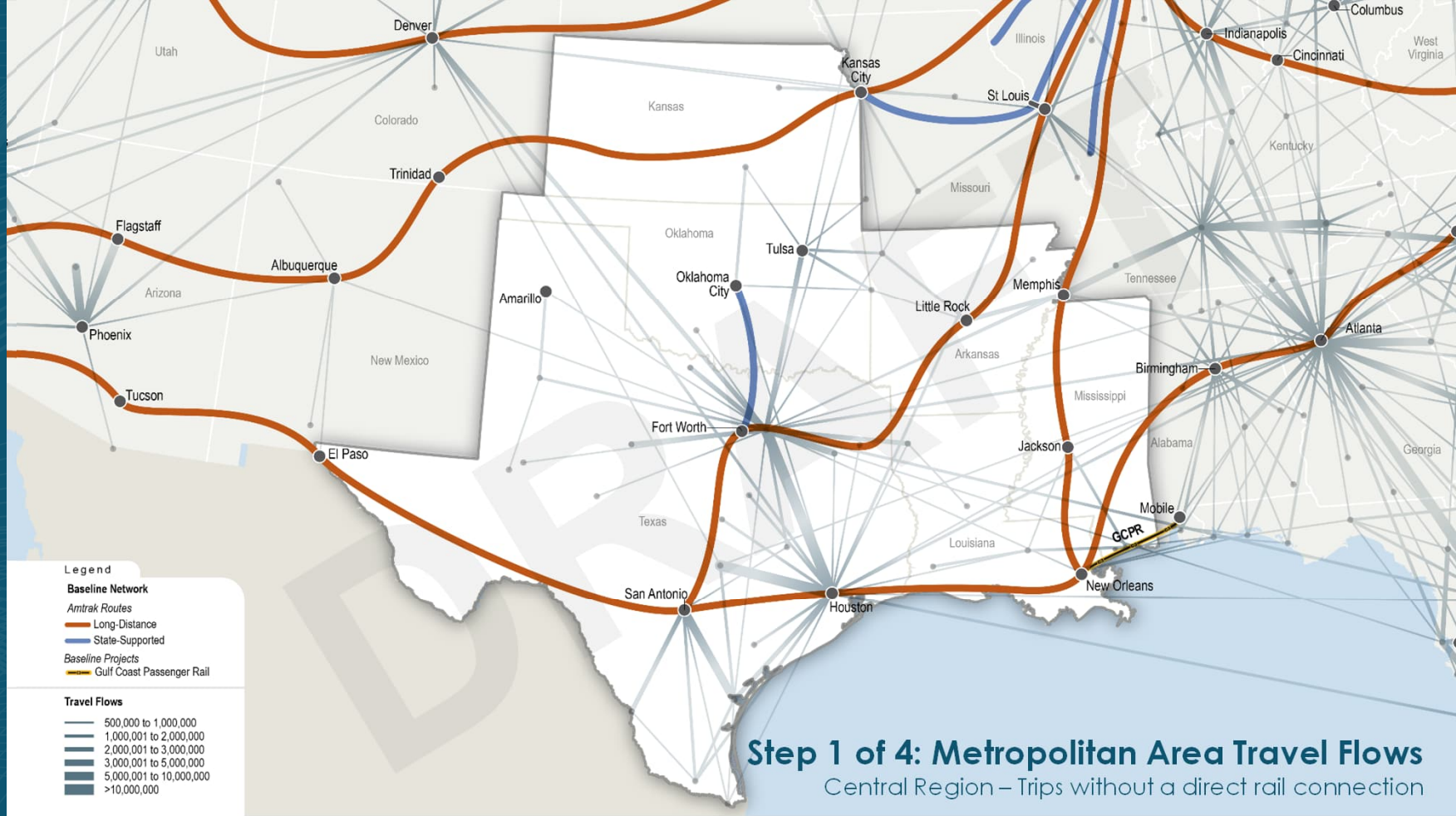
- Brightline
- Gulf Coast Passenger Rail
- Twin Cities-Milwaukee-Chicago
- CAHSR MOS

Enhanced Network

- Segments
- - - Segment Options

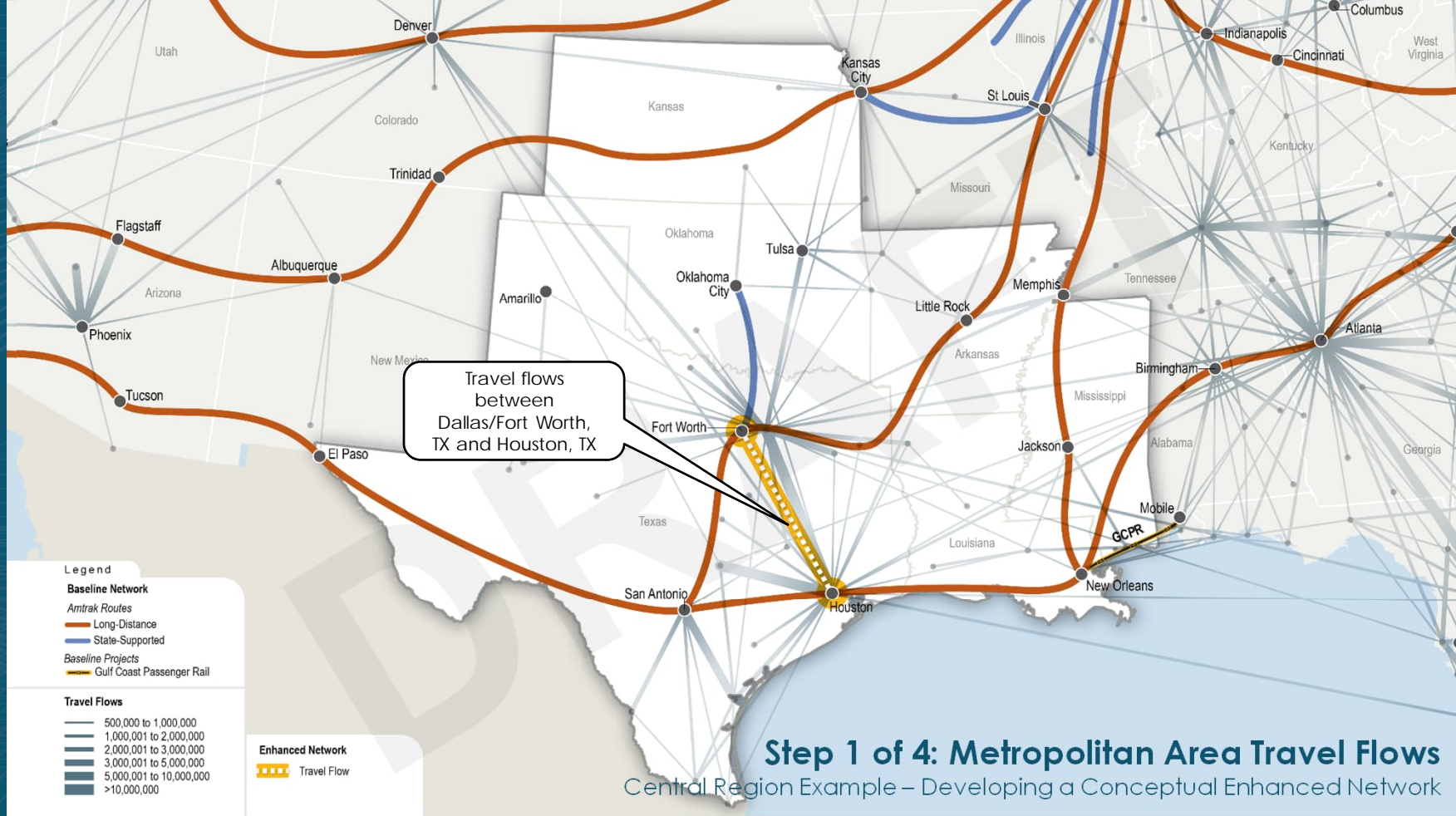
Existing Route and Station Data provided by Amtrak 2022; Baseline Projects Data provided by FRA 2023

STEP 1 OF 4: METROPOLITAN AREA TRAVEL FLOWS REGIONAL EXAMPLES



Step 1 of 4: Metropolitan Area Travel Flows

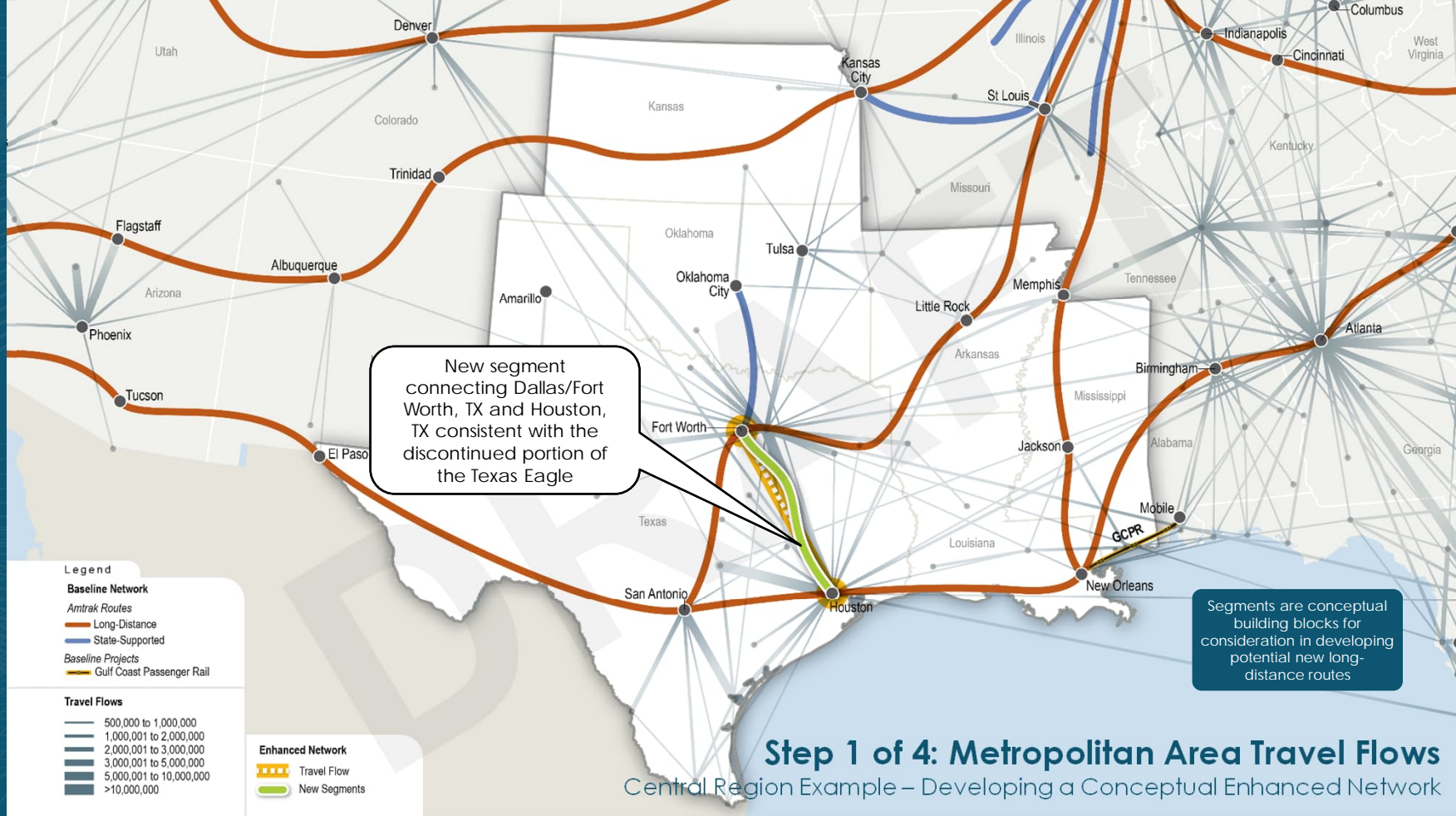
Central Region – Trips without a direct rail connection

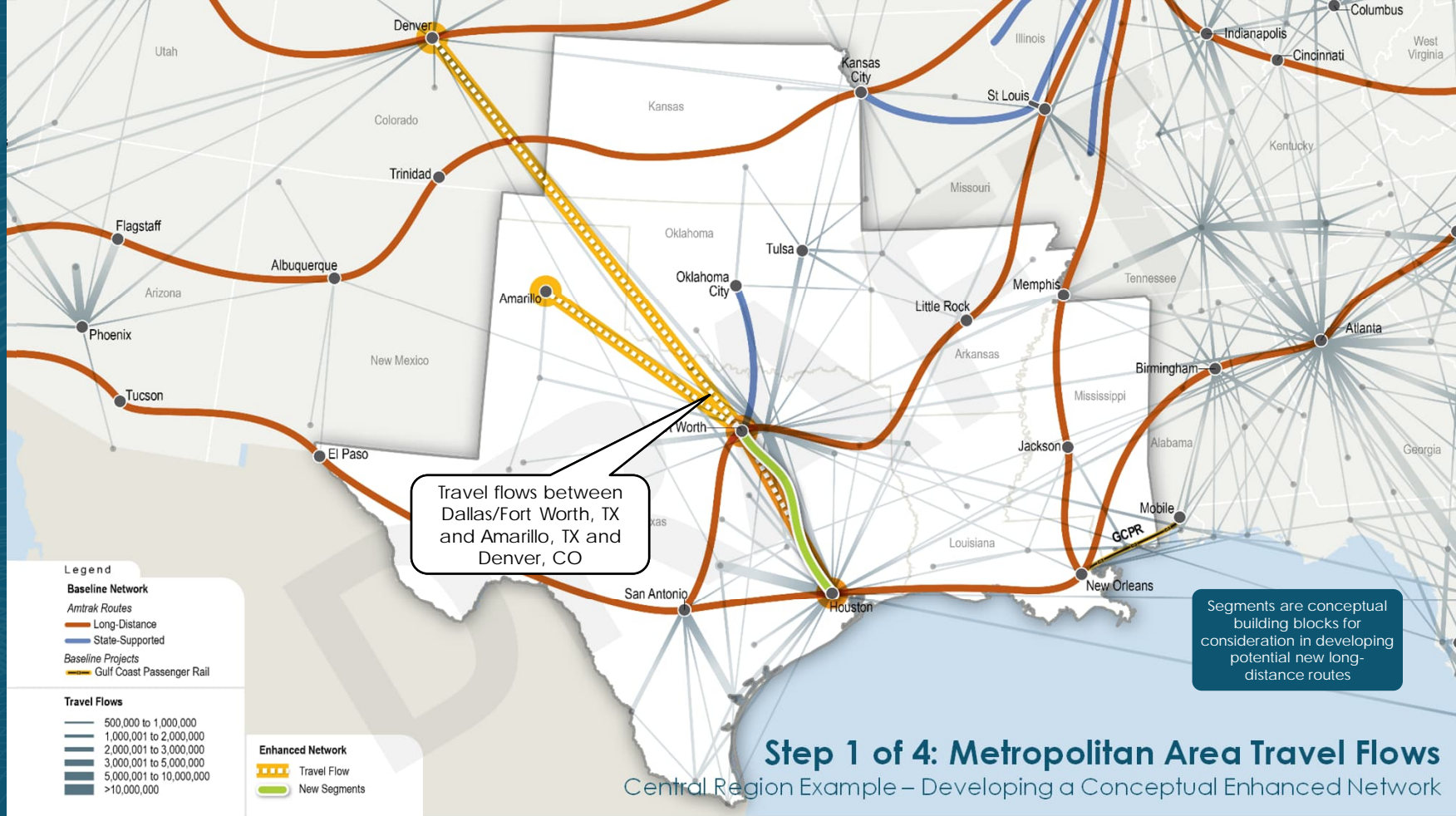


Travel flows between Dallas/Fort Worth, TX and Houston, TX

Step 1 of 4: Metropolitan Area Travel Flows

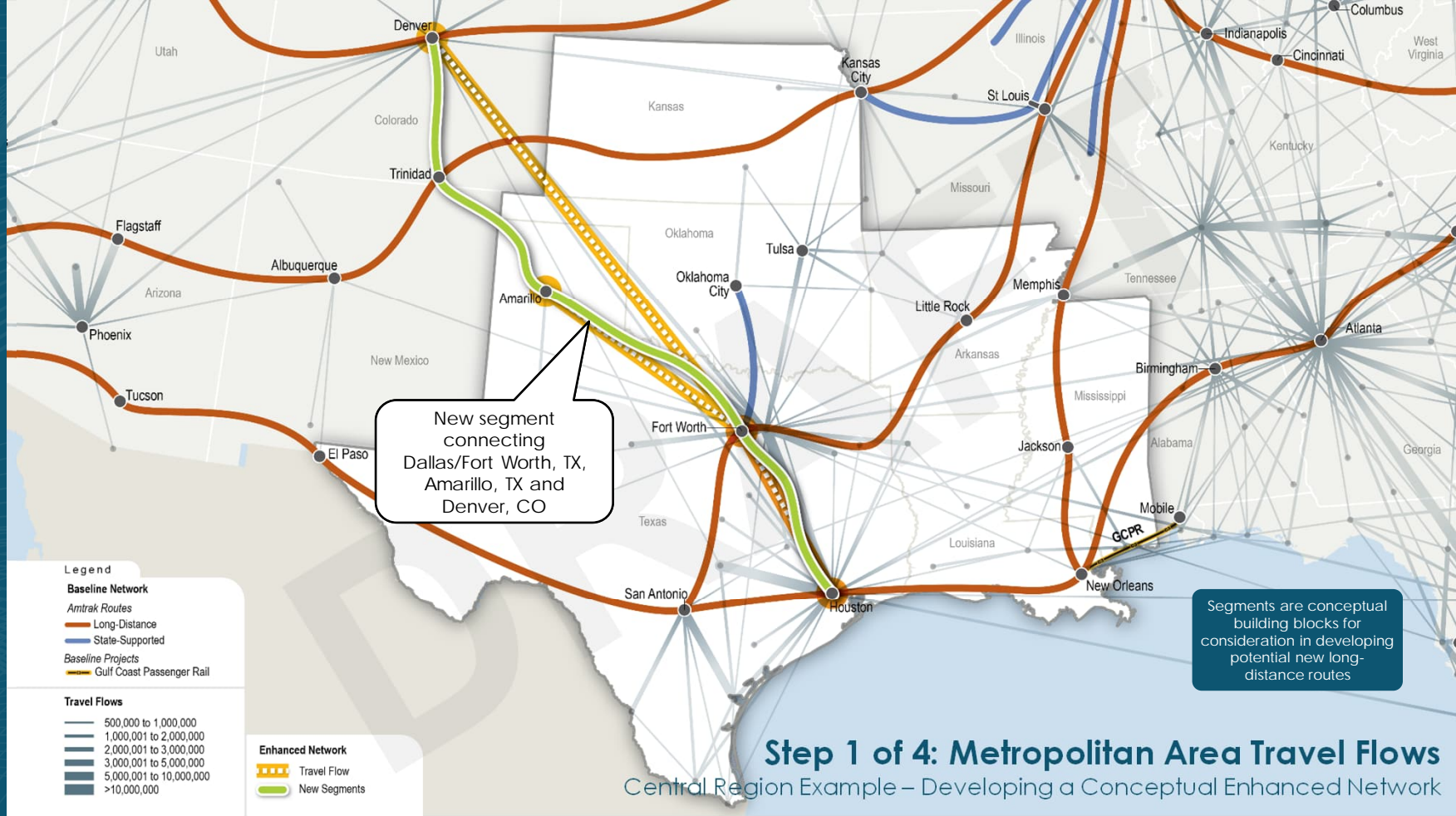
Central Region Example – Developing a Conceptual Enhanced Network

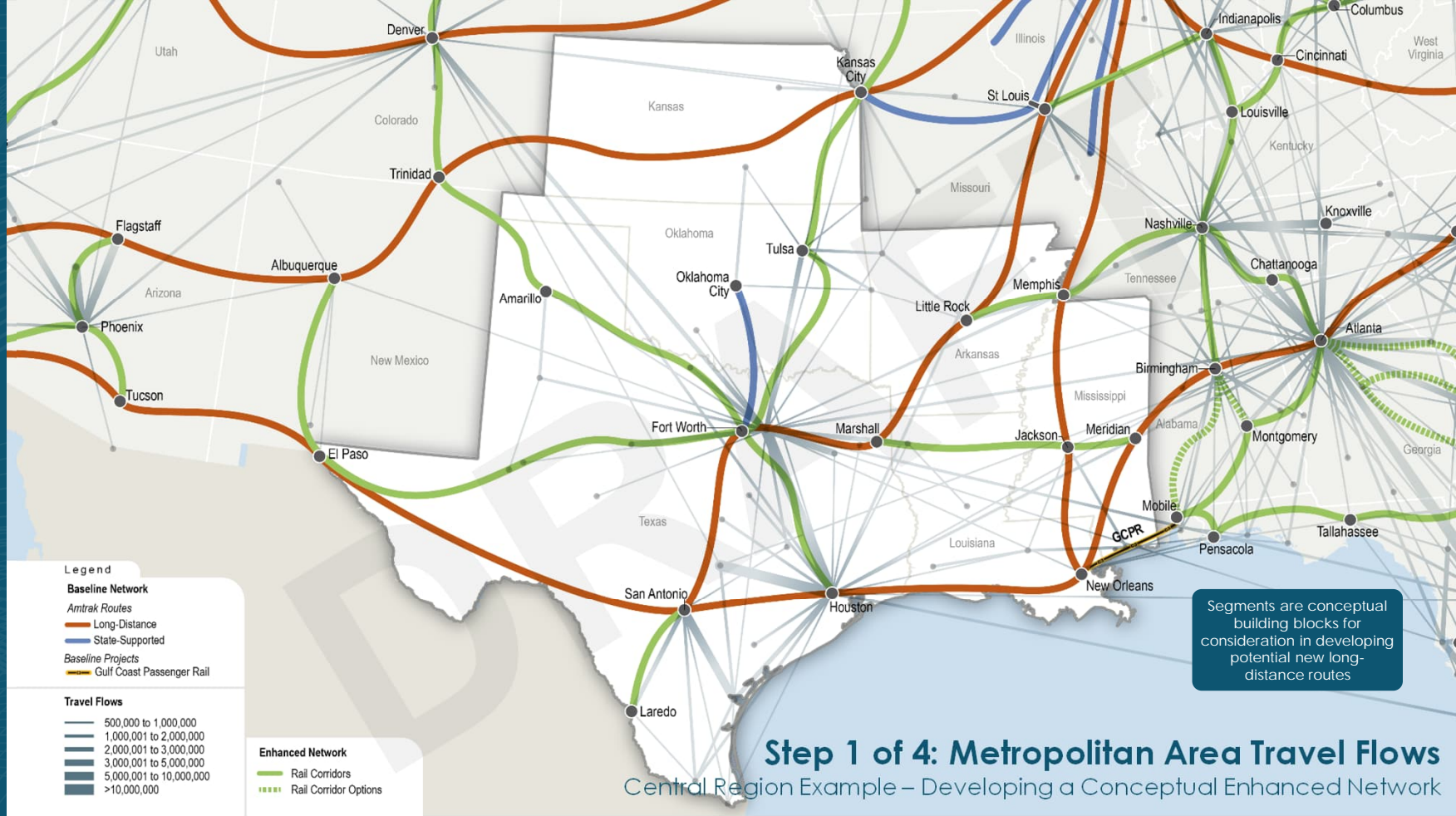




Step 1 of 4: Metropolitan Area Travel Flows

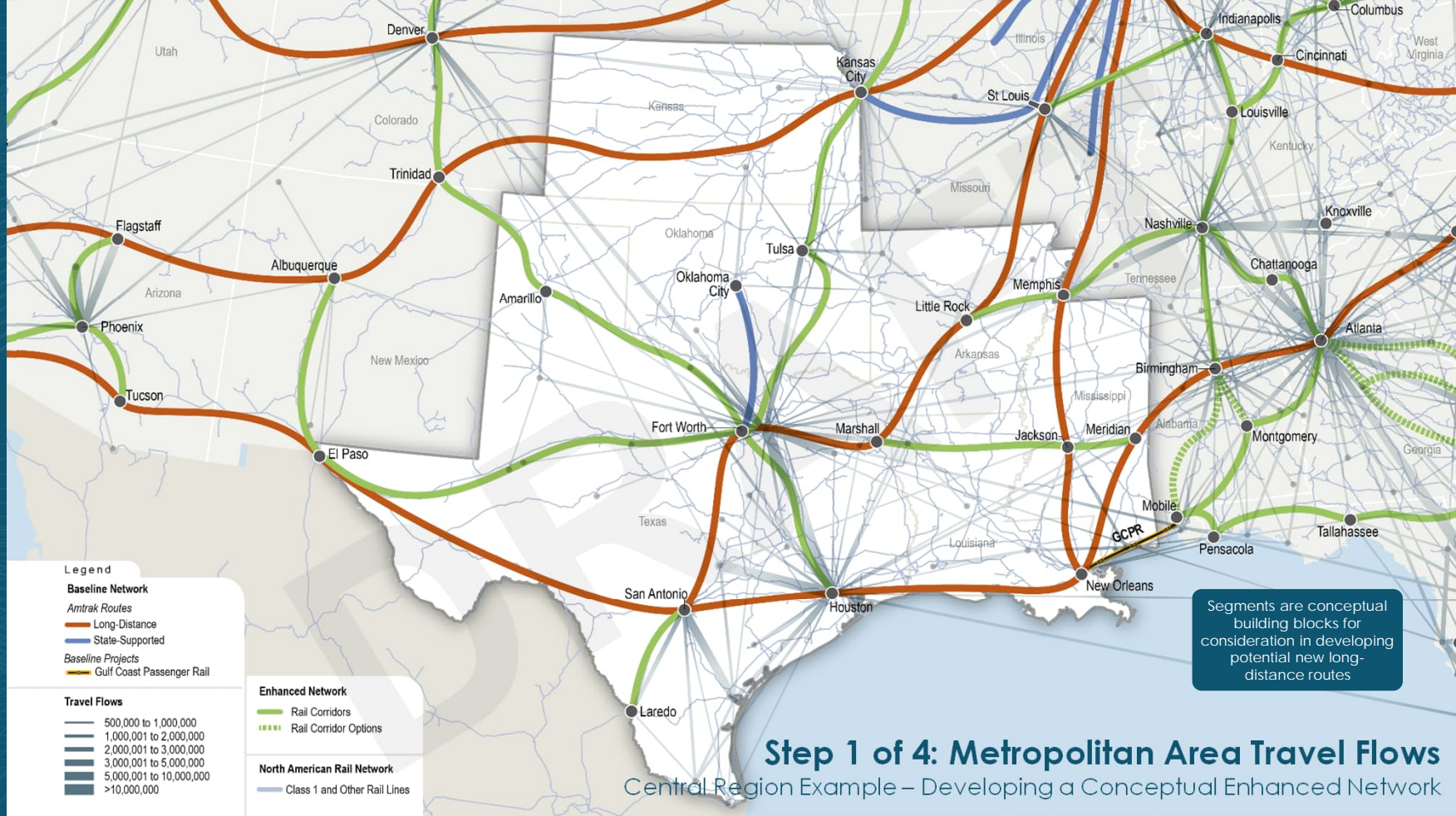
Central Region Example – Developing a Conceptual Enhanced Network





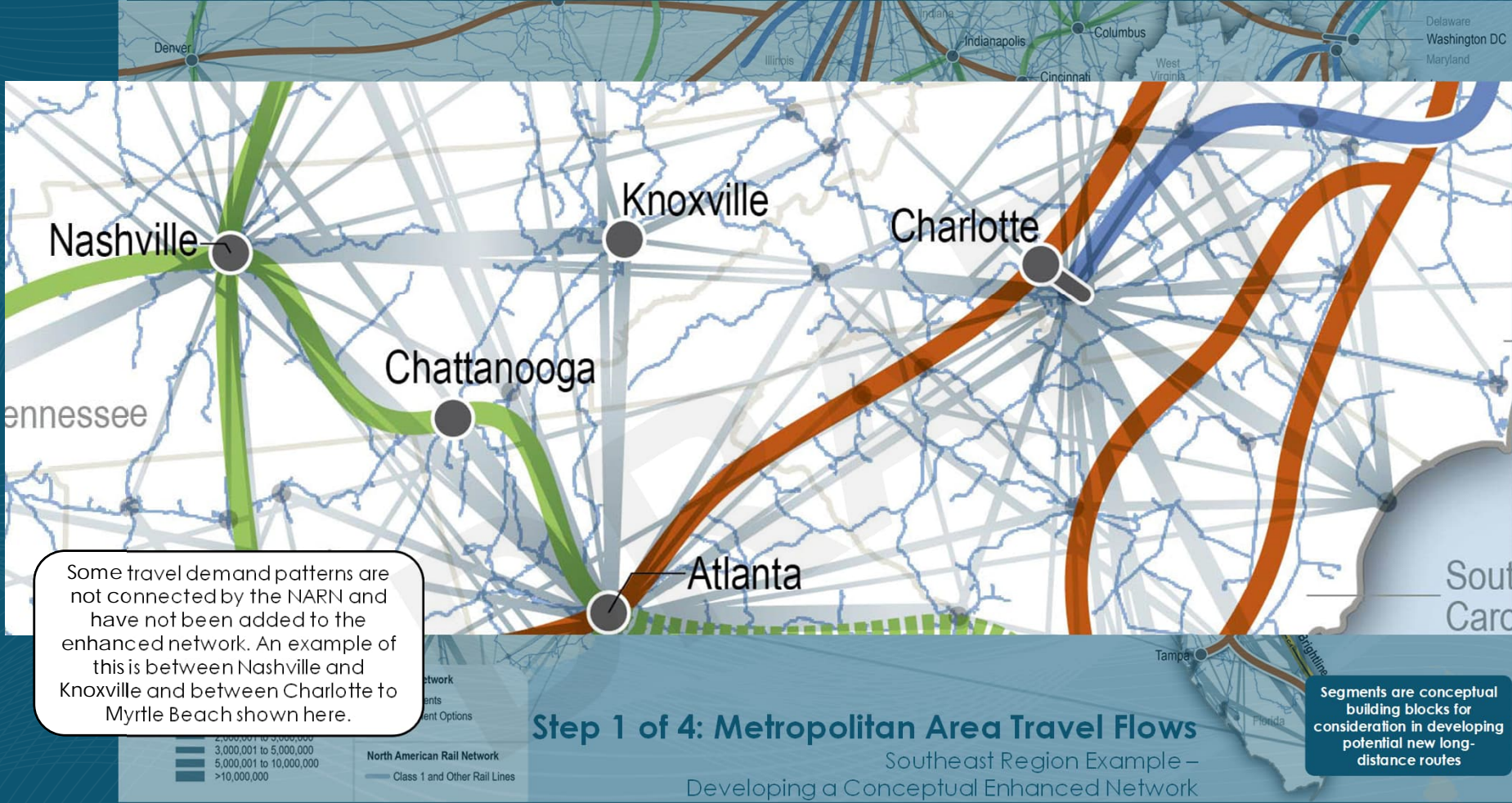
Step 1 of 4: Metropolitan Area Travel Flows

Central Region Example – Developing a Conceptual Enhanced Network



Step 1 of 4: Metropolitan Area Travel Flows

Central Region Example – Developing a Conceptual Enhanced Network



Some travel demand patterns are not connected by the NARN and have not been added to the enhanced network. An example of this is between Nashville and Knoxville and between Charlotte to Myrtle Beach shown here.

Step 1 of 4: Metropolitan Area Travel Flows

Southeast Region Example –
Developing a Conceptual Enhanced Network

Segments are conceptual building blocks for consideration in developing potential new long-distance routes

STEP 2: RURAL ACCESSIBILITY

Step 2 of 4: Rural Accessibility

Developing a Conceptual Enhanced Network



Segments are conceptual building blocks for consideration in developing potential new long-distance routes

Legend

Baseline Network

- Amtrak Routes
- Long-Distance
- Northeast Corridor
- State-Supported

Baseline Projects

- Brightline
- Gulf Coast Passenger Rail
- Twin Cities-Milwaukee-Chicago
- CAHSR MOS

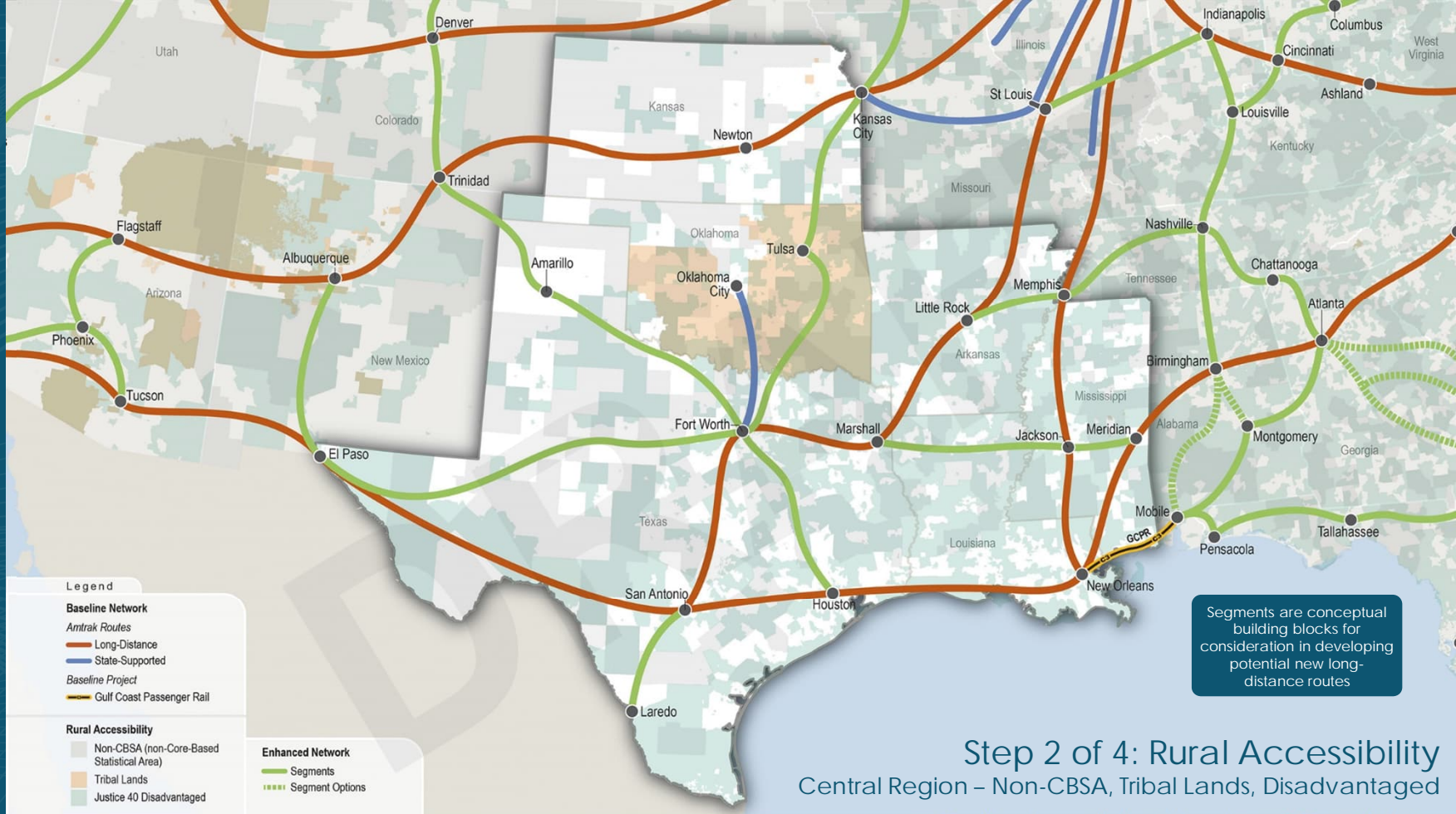
Enhanced Network

- Segments
- Segment Options



Existing Route and Station Data provided by Amtrak 2022; Baseline Projects Data provided by FRA 2023

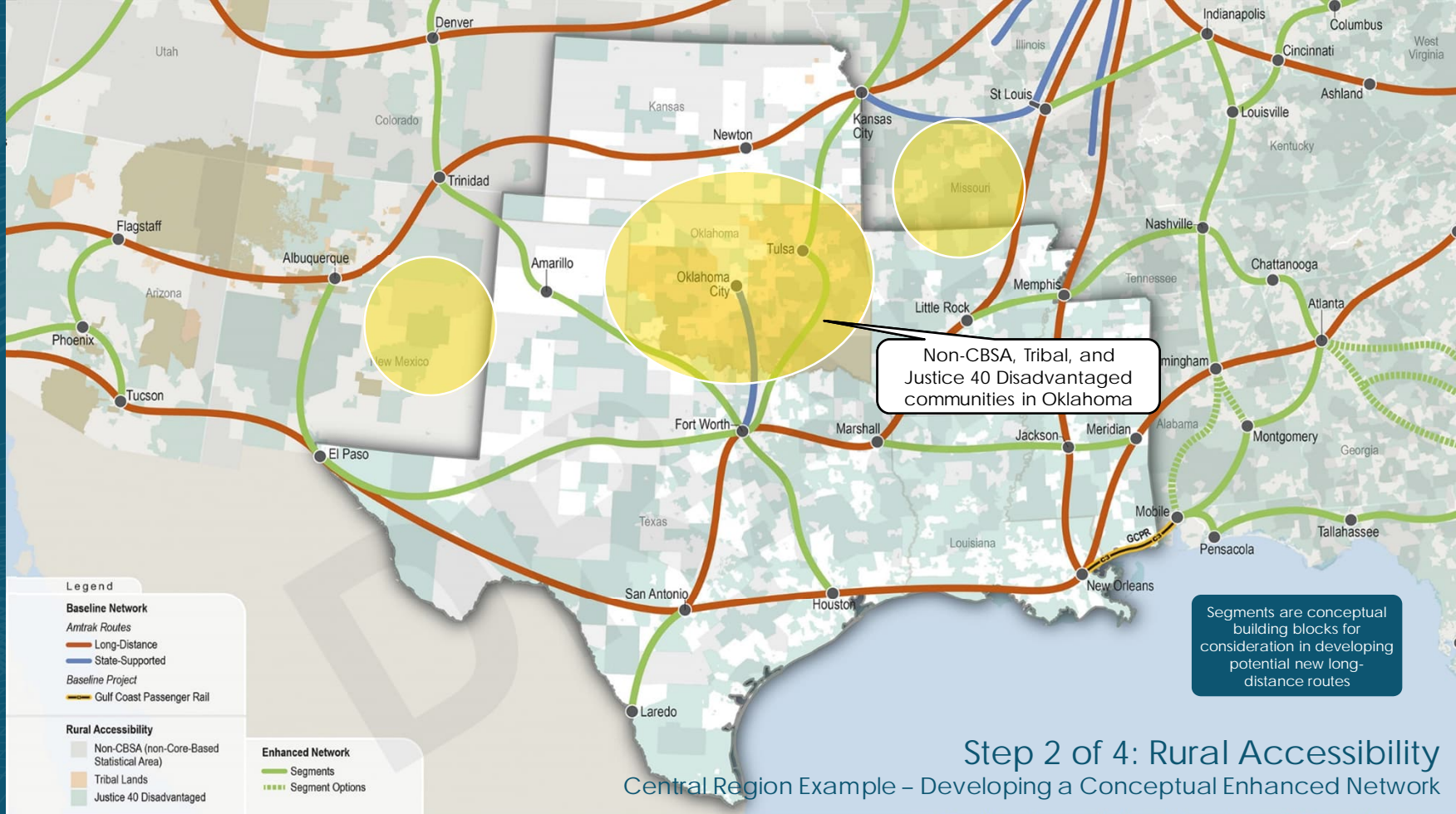
STEP 2 OF 4: RURAL ACCESSIBILITY REGIONAL EXAMPLES



Step 2 of 4: Rural Accessibility

Central Region – Non-CBSA, Tribal Lands, Disadvantaged

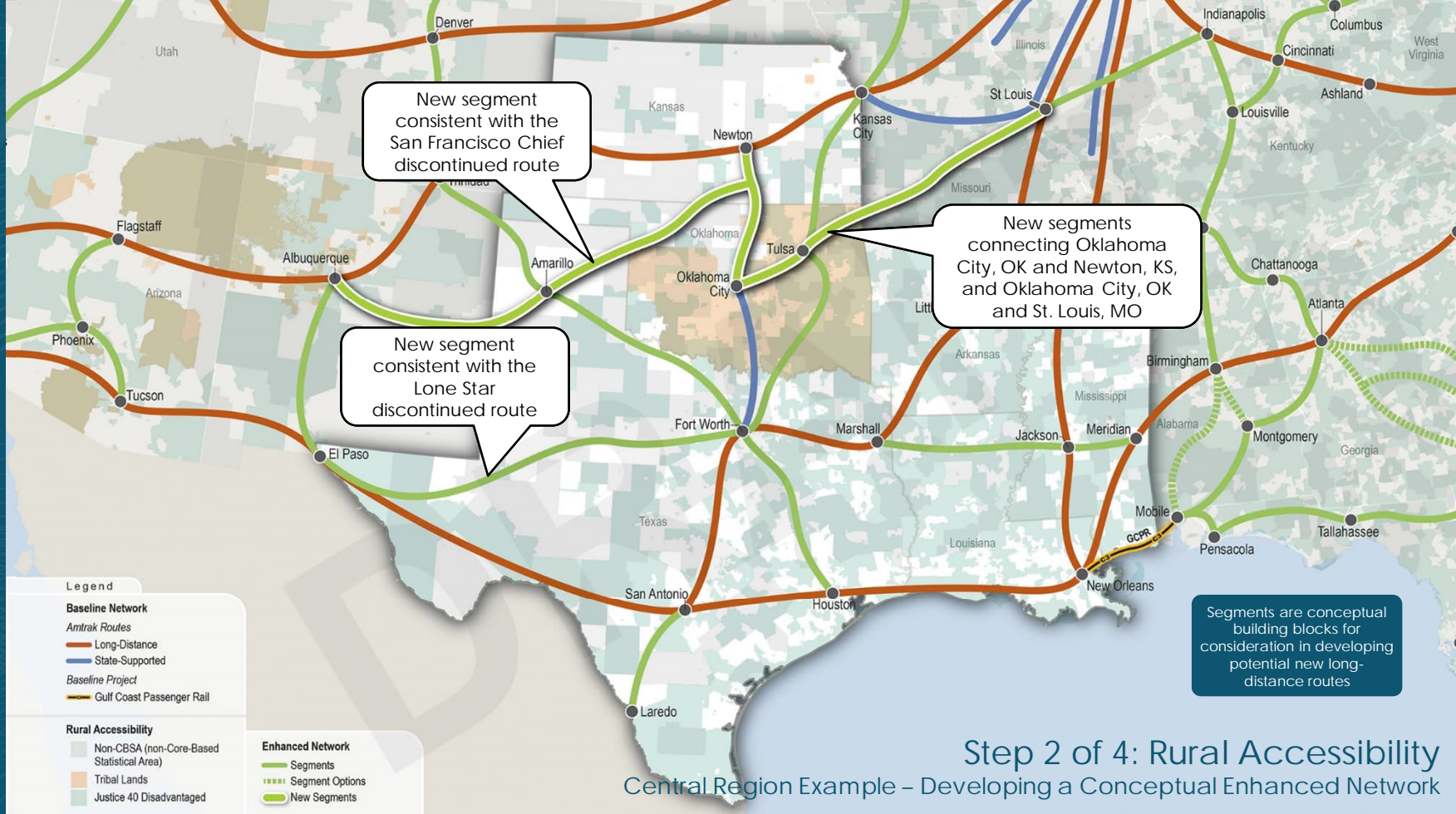
Existing Route and Station Data provided by Amtrak 2022; Committed Projects Data provided by FRA 2023



Step 2 of 4: Rural Accessibility

Central Region Example – Developing a Conceptual Enhanced Network

Existing Route and Station Data provided by Amtrak 2022; Committed Projects Data provided by FRA 2023



Step 2 of 4: Rural Accessibility

Central Region Example – Developing a Conceptual Enhanced Network

Existing Route and Station Data provided by Amtrak 2022; Committed Projects Data provided by FRA 2023

STEP 3 – GEOGRAPHIC COVERAGE/NETWORK CONNECTIVITY

Step 3 of 4: Geographic Coverage

Developing a Conceptual Enhanced Network



Legend

Baseline Network

Amtrak Routes

— Long-Distance

— Northeast Corridor

— State-Supported

Baseline Projects

— Brightline

— Gulf Coast Passenger Rail

— Twin Cities–Milwaukee–Chicago

— CAHSR MOS

Enhanced Network

— Segments

— Segment Options

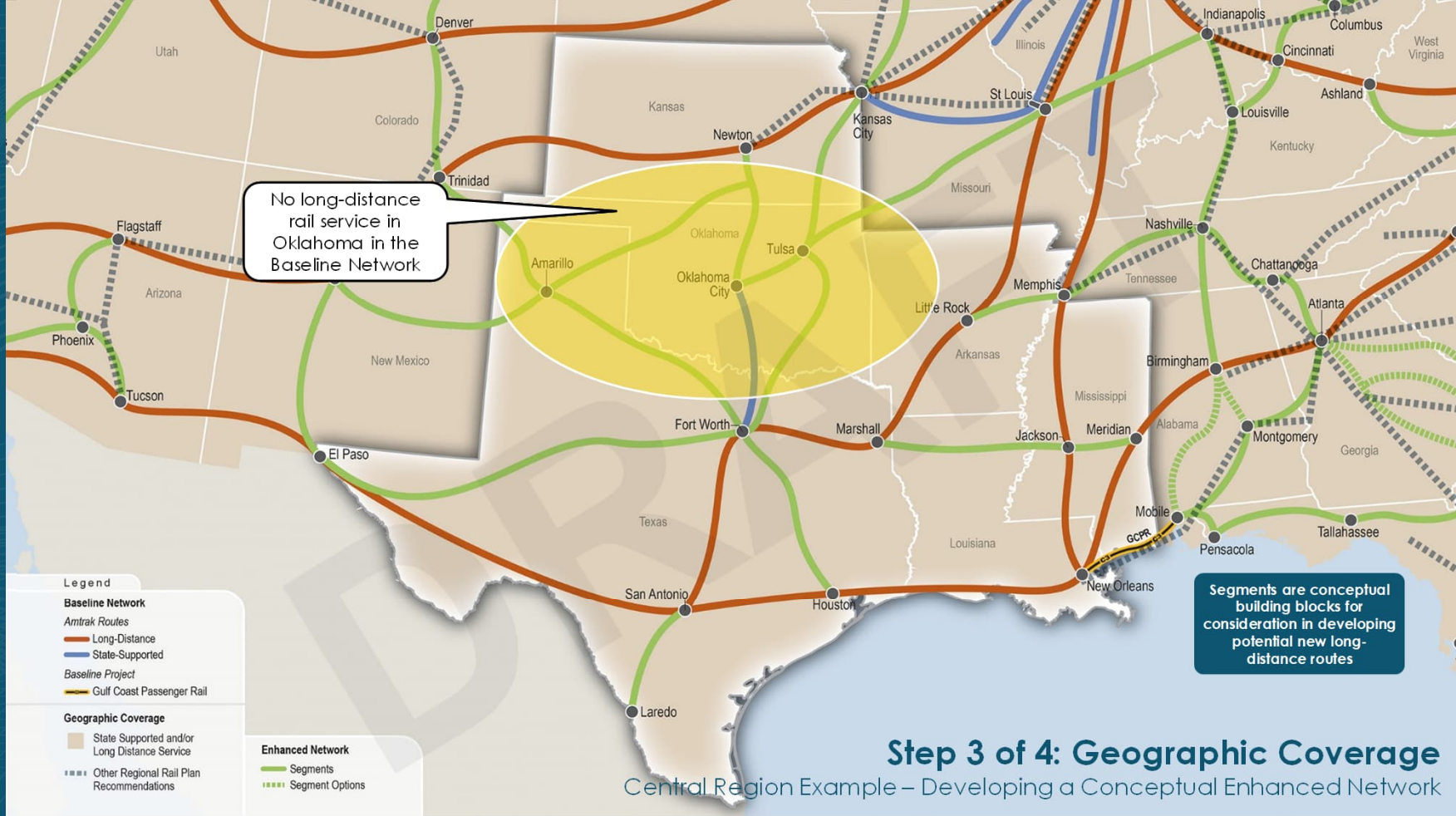
Segments are conceptual building blocks for consideration in developing potential new long-distance routes

STEP 3 OF 4: GEOGRAPHIC COVERAGE REGIONAL EXAMPLES



Step 3 of 4: Geographic Coverage

Central Region Example – Regional Rail Plans

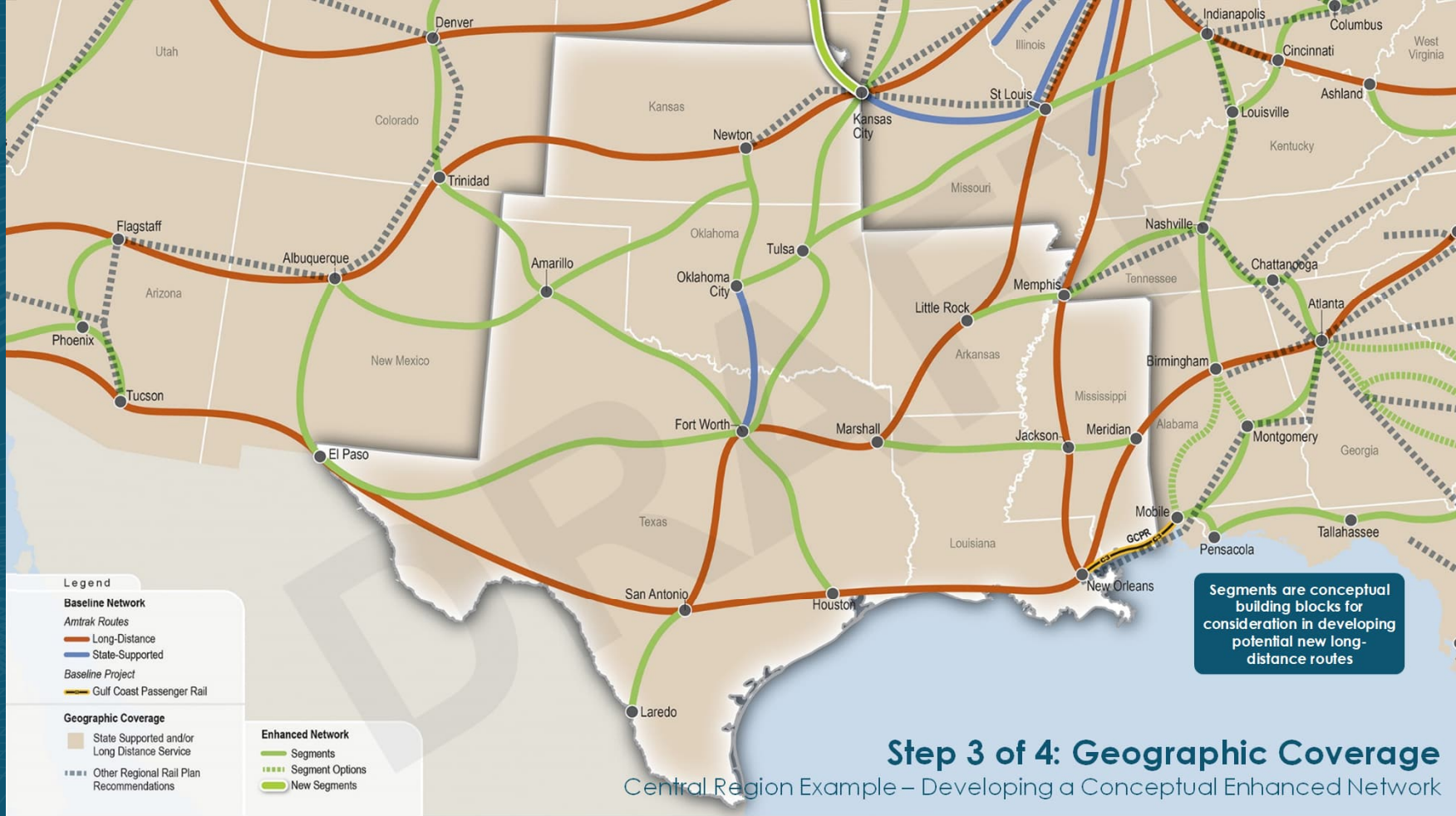


No long-distance rail service in Oklahoma in the Baseline Network

Segments are conceptual building blocks for consideration in developing potential new long-distance routes

Step 3 of 4: Geographic Coverage

Central Region Example – Developing a Conceptual Enhanced Network



Segments are conceptual building blocks for consideration in developing potential new long-distance routes

Step 3 of 4: Geographic Coverage

Central Region Example – Developing a Conceptual Enhanced Network

STEP 4 – STAKEHOLDER INPUT

Top Places Suggested by Stakeholders



Yakima
Seattle
Spokane
Portland
Billings
Denver

Salt Lake City
Los Angeles
Las Vegas
Phoenix
Tucson

○ Top suggested places

Legend

Baseline Network

Amtrak Routes

- Long-Distance
- Northeast Corridor
- State-Supported

Baseline Projects

- Brightline
- Gulf Coast Passenger Rail
- Twin Cities-Milwaukee-Chicago
- CAHSR MOS

Enhanced Network

- Rail Corridors
- Rail Corridor Options

Chicago
Kansas City
Twin Cities
St. Louis
Detroit
Sioux Falls

New York City
Pittsburgh
Washington DC
Montreal
Boston

Segments are conceptual building blocks for consideration in developing potential new long-distance routes

Atlanta
Florida
Nashville
Miami
Jacksonville
Louisville

Dallas Fort Worth
New Orleans
San Antonio
El Paso

Houston
Wichita
Newton